

Sample Name :Dynorphin A(1-13),porcine  
Cat. No. : RP20492  
Lot. No. : PE6621811  
Time Processed : 13:03:58  
Month-Day-Year Processed : 11/24/2018

Pump A : 0.065% trifluoroacetic in 100% water (v/v)  
Pump B : 0.05% trifluoroacetic in 100% acetonitrile (v/v)  
Total Flow:1 ml/min  
Wavelength:220 nm

| Time  | Unit       | Command      | Value | Comment |
|-------|------------|--------------|-------|---------|
| 0.01  | Pumps      | Pump B Conc. | 5     |         |
| 25.00 | Pumps      | Pump B Conc. | 65    |         |
| 25.01 | Pumps      | Pump B Conc. | 95    |         |
| 32.00 | Pumps      | Pump B Conc. | 95    |         |
| 32.01 | Pumps      | Pump B Conc. | 5     |         |
| 40.00 | Pumps      | Pump B Conc. | 5     |         |
| 40.01 | Controller | Stop         |       |         |

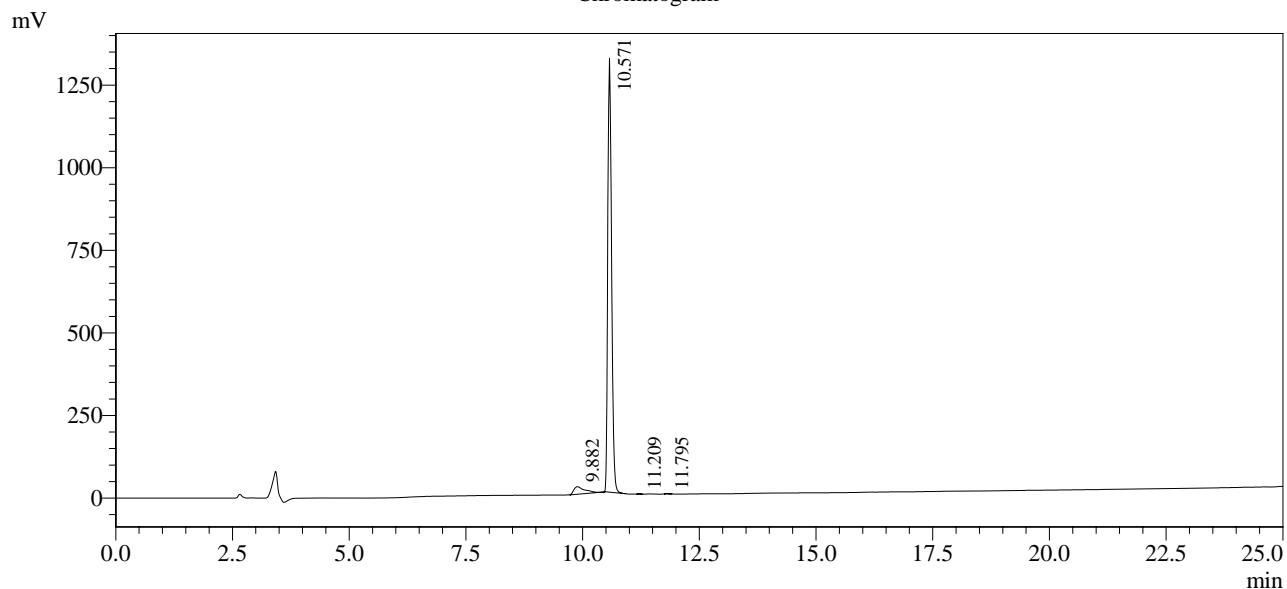
<<Column Performance>>

<Detector A>

Column : Inertsil ODS-3 4.6 x 250 mm

Equipment: G09010878

Chromatogram



1 Det.A Ch1 / 220nm

Peak Table

Detector A Ch1 220nm

| Peak# | Ret. Time | Area    | Height  | Area %  |
|-------|-----------|---------|---------|---------|
| 1     | 9.882     | 370981  | 22857   | 4.710   |
| 2     | 10.571    | 7496459 | 1313572 | 95.179  |
| 3     | 11.209    | 4020    | 1092    | 0.051   |
| 4     | 11.795    | 4695    | 1091    | 0.060   |
| Total |           | 7876155 | 1338612 | 100.000 |