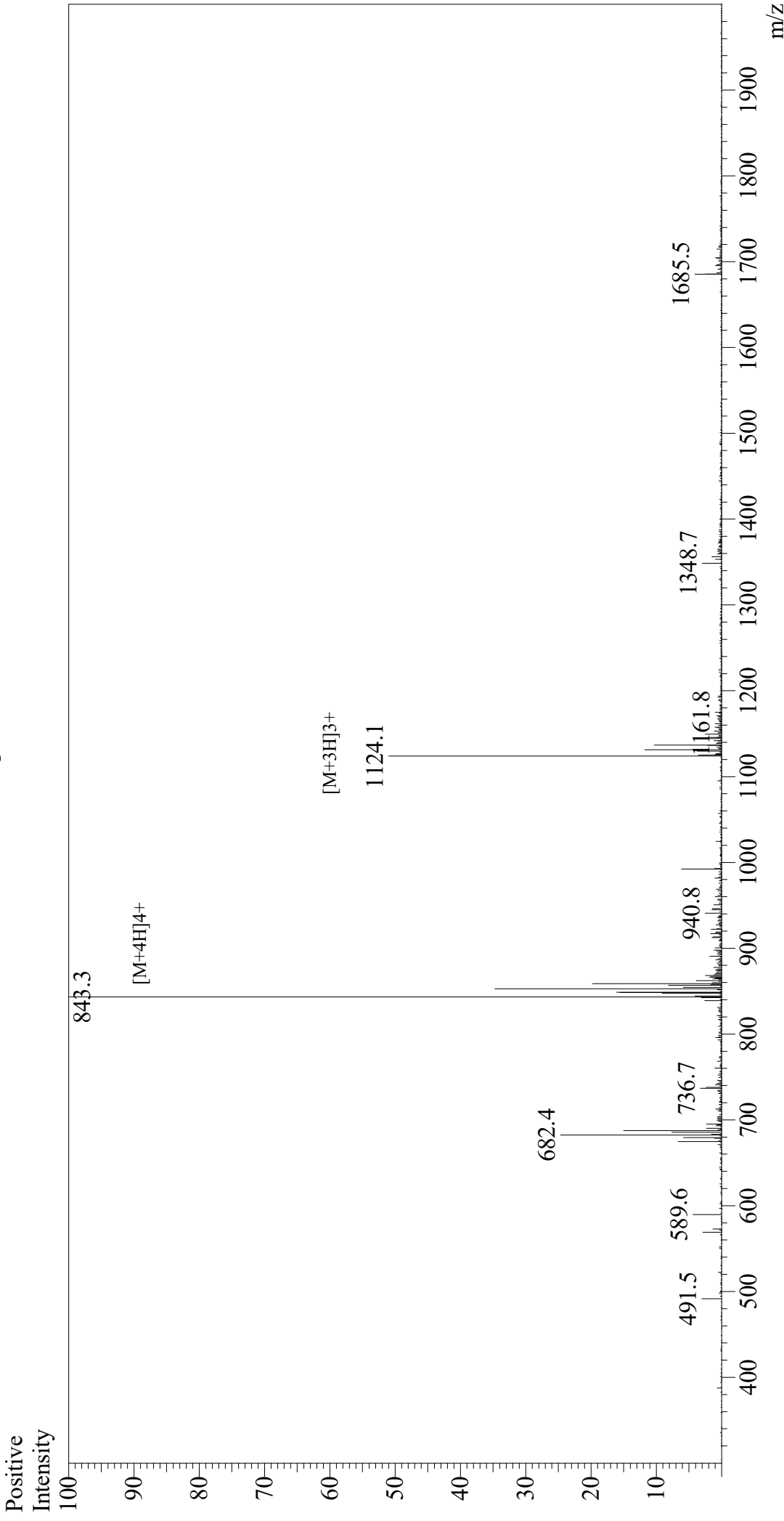


Mass Spectrum



Sample Information
Month-Day Processed : 09/20/20
Time Processed : 06:50:36 AM
Injection Volume : 0.3
Sample Name : Exendin (9-39)
Cat. No. : RP10872
Lot. No. : E1884220I
Theoretical MW : 3369.76
Observed MW : 3369.2

Interface : ESI
Nebulizing Gas Flow : 1.5L/min
CDL Temp : 250
Block Temp : 200

Equipment : GK11010007
Interface Bias : +4.5 kV
Drying Gas Flow : 5 L/min
T.Flow : 0.2 ml/min
B.conc : 50% H₂O/50% MeOH