

Sample Name: Exendin (9-39)
 Cat. No. : RP10872
 Lot. No. : E18842201
 Time Processed : 11:52:11 AM
 Month-Day-Year Processed : 09/21/2020
 Pump A : 0.065% trifluoroacetic in 100% water (v/v)
 Pump B : 0.05% trifluoroacetic in 100% acetonitrile (v/v)
 Total Flow: 1 ml/min
 Wavelength: 220 nm

<<LC Time Program>>

Time	Module	Command	Value
0.01	Pumps	Pump A B.Conc	5
25.00	Pumps	Pump A B.Conc	65
25.01	Pumps	Pump A B.Conc	95
27.00	Pumps	Pump A B.Conc	95
27.01	Pumps	Pump A B.Conc	5
35.00	Pumps	Pump A B.Conc	5
35.01	Controller	Stop	

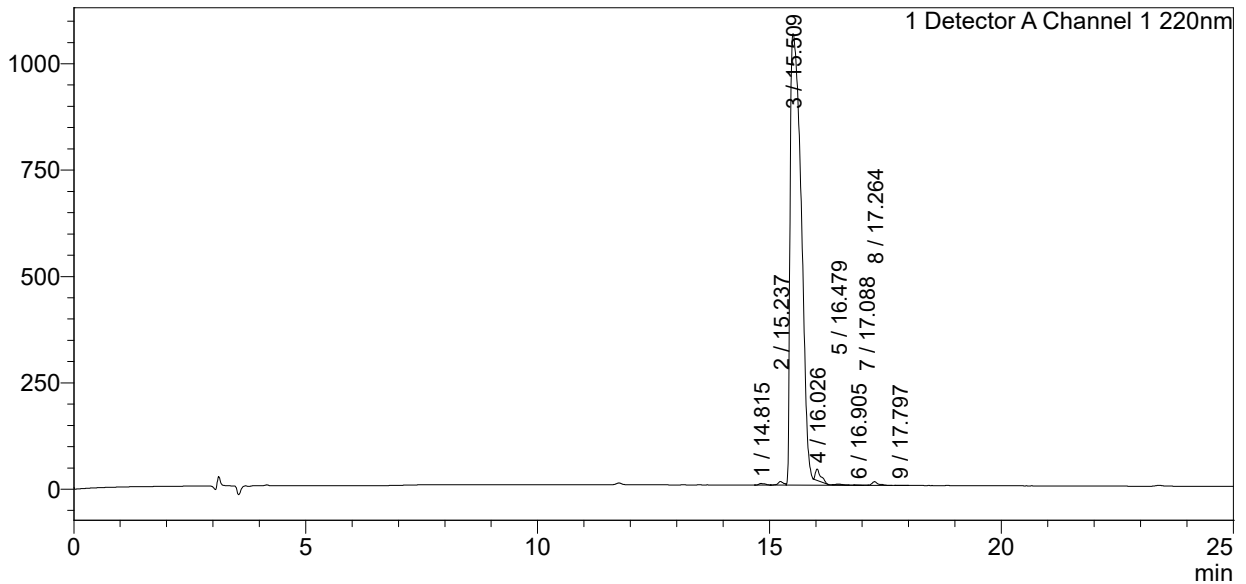
<<Column Performance>>

<Detector A>

Column : Inertsil ODS-3 4.6 x 250 mm
 Equipment: GK11010009

<Chromatogram>

mV



<Peak Table>

Detector A Channel 1 220nm

Peak#	Ret. Time	Area	Height	Area%
1	14.815	40268	3953	0.222
2	15.237	75147	8877	0.415
3	15.509	17683252	1061602	97.615
4	16.026	211749	26814	1.169
5	16.479	19097	2067	0.105
6	16.905	3507	640	0.019
7	17.088	2100	461	0.012
8	17.264	77825	8585	0.430
9	17.797	2432	280	0.013
Total		18115378	1113279	100.000