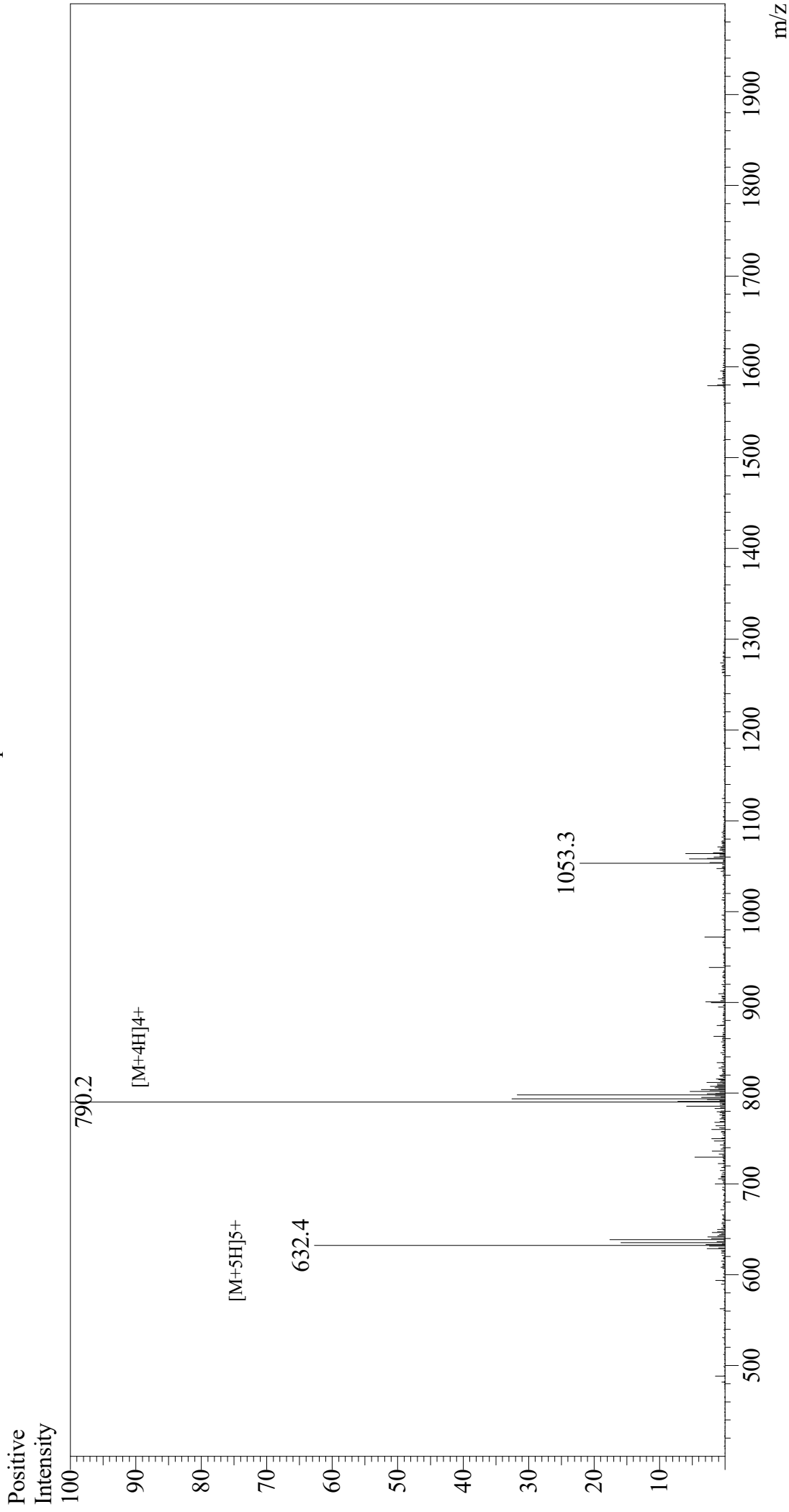


Mass Spectrum



Sample Information

Month-Day Processed : 07/17/21
Time Processed : 7:19:33
Injection Volume : 0.4
Sample Name : Galanin, human
Cat No. : RPI0801
Lot No. : E9397021G
Theoretical MW : 3157.41
Observed MW : 3156.8

Interface : ESI
Nebulizing Gas Flow : 1.5L/min
CDL Temp : 250
Block Temp : 200

Equipment : GK11010007
Interface Bias : +3.5 kV
Drying Gas Flow : 5 L/min
T.Flow : 0.2 ml/min
B.conc : 50%H2O/50%MeOH