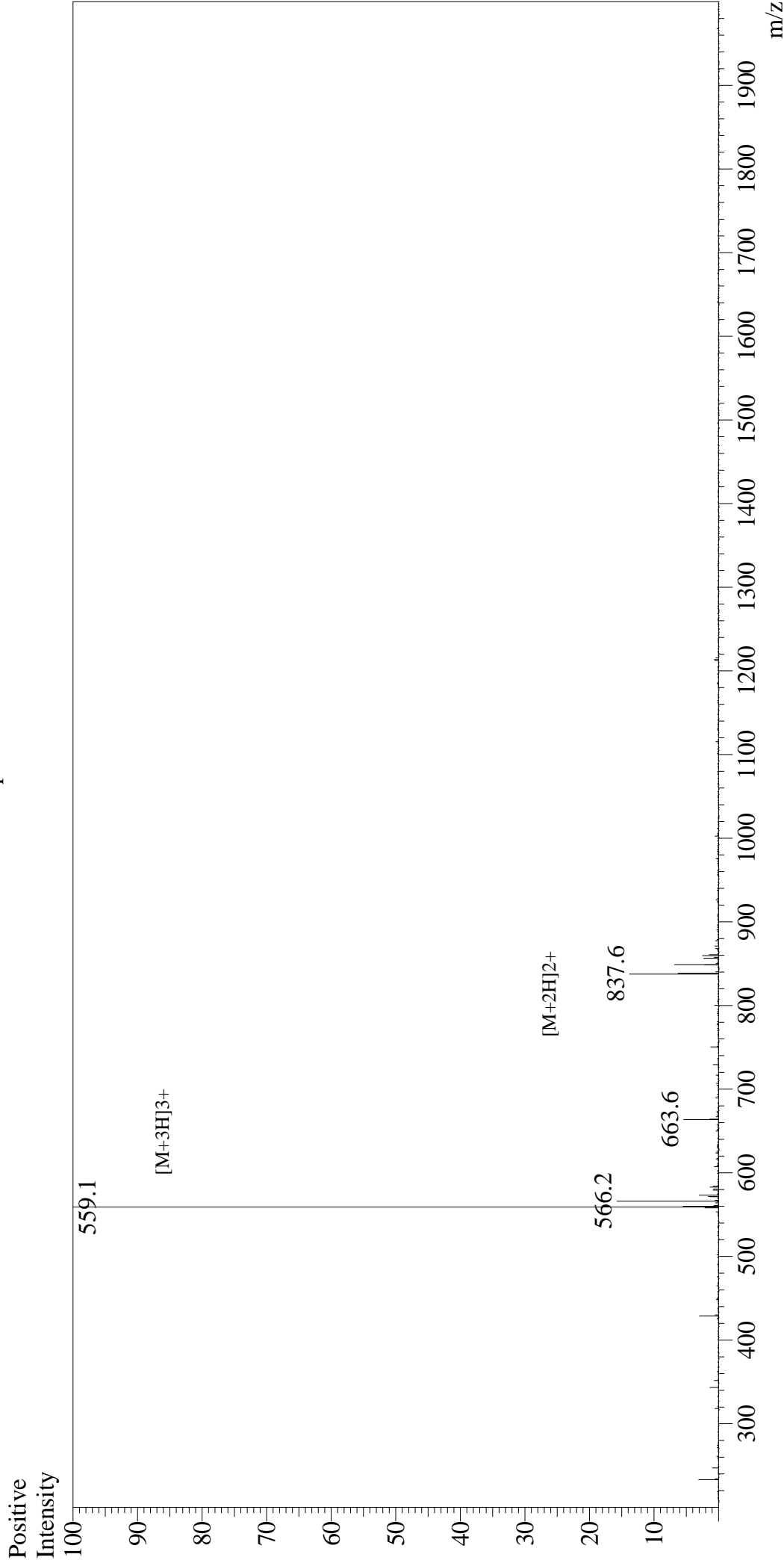


# Mass Spectrum



## Sample Information

User : Gary  
 Month-Day Processed : 01/13/20  
 Time Processed : 22:42:14  
 Injection Volume : 0.3  
 Sample Name : CLIP (86 - 100)  
 Cat No. : RP20279  
 Lot No. : E2276820A  
 Theoretical MW : 1674.10  
 Observed MW : 1674.3

Interface : ESI  
 Nebulizing Gas Flow : 1.5L/min  
 CDL Temp : 250  
 Block Temp : 200

Equipment : GK11010007  
 Interface Bias : +4.5kV  
 Drying Gas Flow : 5 L/min  
 T.Flow : 0.2ml/min  
 B.conc : 50%H2O/50%MeOH