

Sample Name :Glucagon (1-29), Human, Hydrochloride Salt  
 Cat. No. : RP10772 Lot. No. : PE9821806

Pump A : 0.065% trifluoroacetic in 100% water (v/v)  
 Pump B : 0.05% trifluoroacetic in 100% acetonitrile (v/v)  
 Total Flow:1 ml/min  
 Wavelength:220 nm

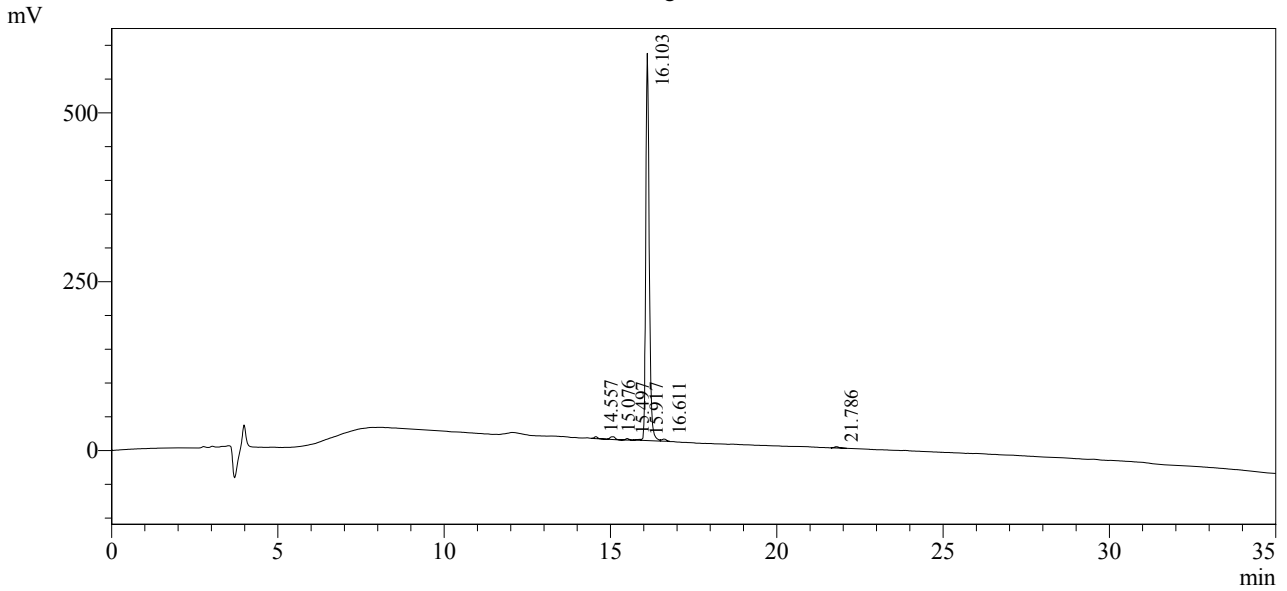
| Time  | Unit       | Command      | Value | Comment |
|-------|------------|--------------|-------|---------|
| 0.01  | Pumps      | Pump B Conc. | 5     |         |
| 10.00 | Pumps      | Pump B Conc. | 35    |         |
| 35.00 | Pumps      | Pump B Conc. | 95    |         |
| 41.00 | Pumps      | Pump B Conc. | 95    |         |
| 41.01 | Pumps      | Pump B Conc. | 5     |         |
| 50.00 | Pumps      | Pump B Conc. | 5     |         |
| 50.01 | Controller | Stop         |       |         |

<<Column Performance>>

<Detector A>

Column : Inertsil ODS-3 4.6 x 250 mm

Chromatogram



1 Det.A Ch1 / 220nm

Peak Table

Detector A Ch1 220nm

| Peak# | Ret. Time | Area    | Height | Area %  |
|-------|-----------|---------|--------|---------|
| 1     | 14.557    | 19905   | 2788   | 0.461   |
| 2     | 15.076    | 43054   | 4123   | 0.997   |
| 3     | 15.497    | 16882   | 2218   | 0.391   |
| 4     | 15.917    | 14146   | 1545   | 0.328   |
| 5     | 16.103    | 4174629 | 573373 | 96.689  |
| 6     | 16.611    | 29885   | 3158   | 0.692   |
| 7     | 21.786    | 19067   | 1935   | 0.442   |
| Total |           | 4317569 | 589141 | 100.000 |