

Sample Name :Parathyroid Hormone (PTH) (1-34), Human
 Cat No. :RP01001
 Lot No. :E9551119H
 Time Processed :12:09:41
 Month-Day-Year Processed :09/02/19

Pump A : 0.065% trifluoroacetic in 100% water (v/v)
 Pump B : 0.05% trifluoroacetic in 100% acetonitrile (v/v)
 Total Flow:1 ml/min
 Wavelength:220 nm

<<LC Time Program>>

| Time | Module | Command | Value |
|-------|------------|-----------------|-------|
| 0.01 | Pumps | Solvent B Conc. | 5 |
| 25.00 | Pumps | Solvent B Conc. | 65 |
| 25.01 | Pumps | Solvent B Conc. | 95 |
| 27.00 | Pumps | Solvent B Conc. | 95 |
| 27.01 | Pumps | Solvent B Conc. | 5 |
| 33.00 | Pumps | Solvent B Conc. | 5 |
| 33.01 | Controller | Stop | |

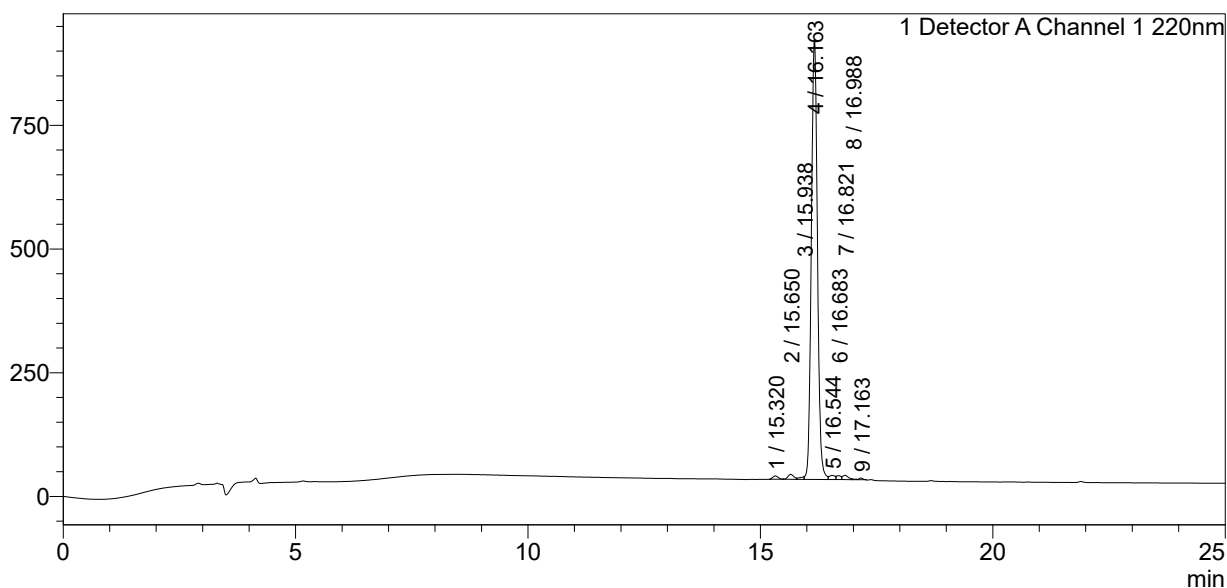
<<Column Performance>>

<Detector A>

Column : Inertsil ODS-3 4.6 x 250 mm
 Equipment: ZJ17010508

<Chromatogram>

mV



<Peak Table>

Detector A Channel 1 220nm

| Peak# | Ret. Time | Area | Height | Area% |
|-------|-----------|---------|--------|---------|
| 1 | 15.320 | 53256 | 6641 | 0.626 |
| 2 | 15.650 | 87530 | 10096 | 1.029 |
| 3 | 15.938 | 35320 | 5009 | 0.415 |
| 4 | 16.163 | 8104684 | 889210 | 95.239 |
| 5 | 16.544 | 73590 | 8473 | 0.865 |
| 6 | 16.683 | 53867 | 7936 | 0.633 |
| 7 | 16.821 | 74867 | 8847 | 0.880 |
| 8 | 16.988 | 6389 | 1498 | 0.075 |
| 9 | 17.163 | 20295 | 3438 | 0.238 |
| Total | | 8509799 | 941148 | 100.000 |