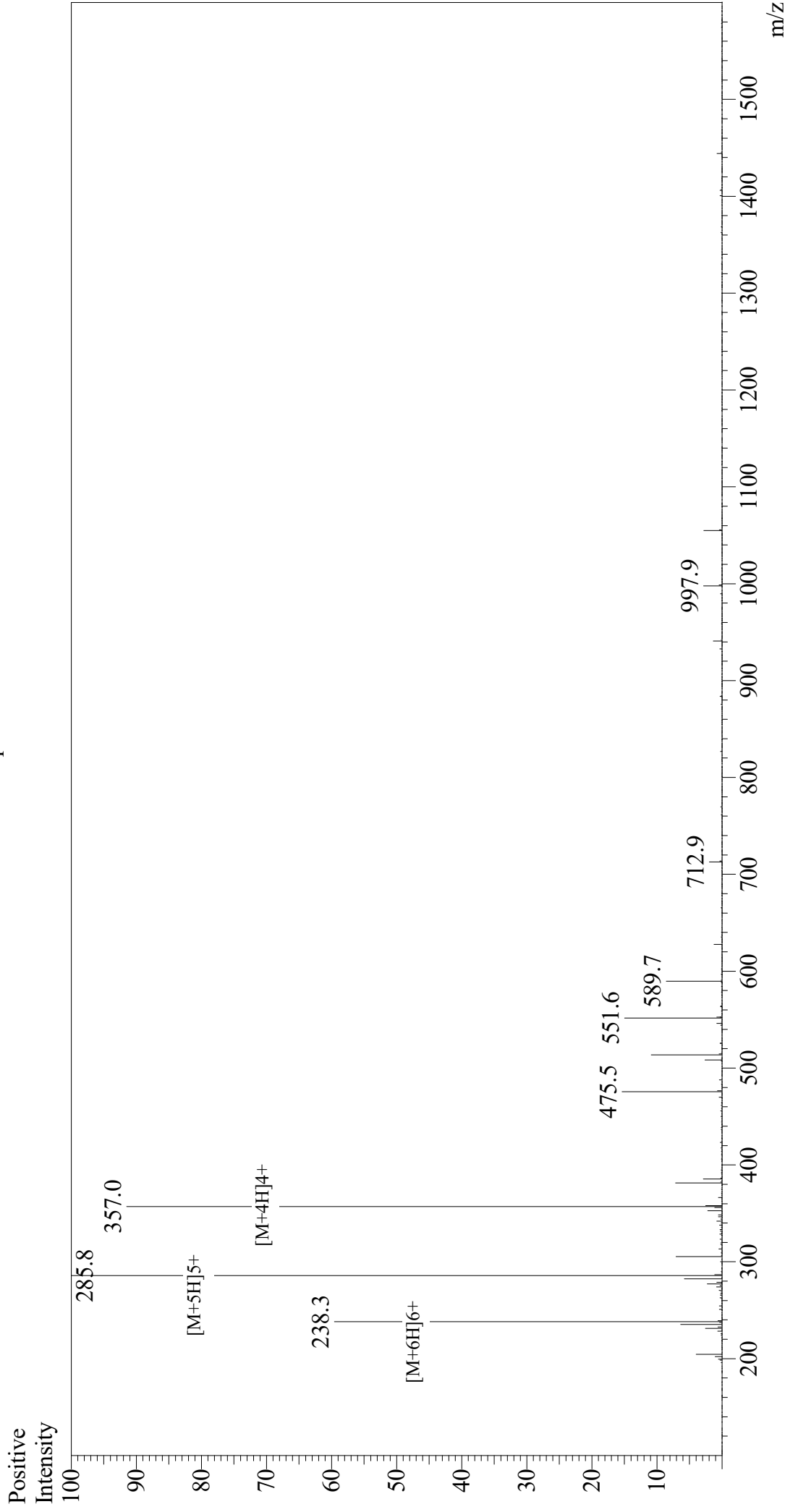


# Mass Spectrum



## Sample Information

Acquired by : Gary  
Month-Day Processed : 12/22/19  
Time Processed : 10:35:39 AM  
Injection Volume : 0.8  
Sample Name : (Arg)9  
Cat. No. : RP20403  
Lot. No. : E9618319L  
Theoretical MW : 1423.70  
Observed MW : 1424.0

## Interface : ESI

Nebulizing Gas Flow : 1.5L/min  
CDL Temp : 250  
Block Temp : 200

## Equipment

Interface Bias : +4.5 kV  
Drying Gas Flow : 5 L/min  
T.Flow : 0.2 ml/min  
B.conc : 50% H<sub>2</sub>O/50% MeOH

: GK11010007