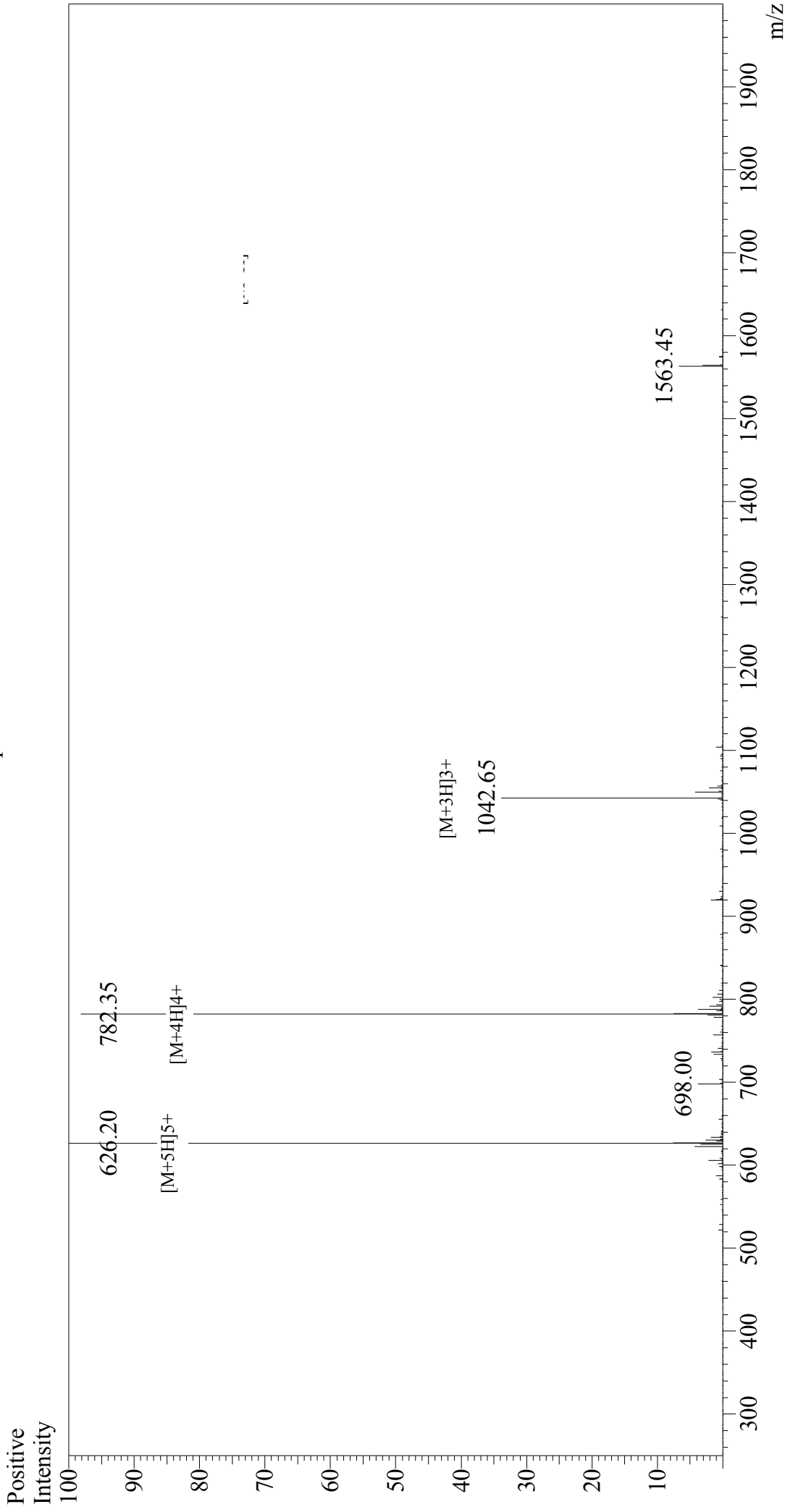


# Mass Spectrum



## Sample Information

Acquired by : Gary  
 Month-Day Processed : 10/20/17  
 Time Processed : 12:00:33  
 Injection Volume : 0.2  
 Sample Name : Calcitonin Gene Related Peptide (CGRP) (8-37), human  
 Cat. No. : RP11089  
 Lot. No. : PE6881710  
 Theoretical MW : 3125.59  
 Observed MW : 3126.00

Interface : ESI  
 Nebulizing Gas Flow : 1.5L/min  
 CDL Temp : 250°C  
 Block Temp : 200°C

Interface Bias : +4.5 kV  
 Drying Gas Flow : 5 L/min  
 T.Flow : 0.2 ml/min  
 B.conc : 50% H<sub>2</sub>O/50% MeOH