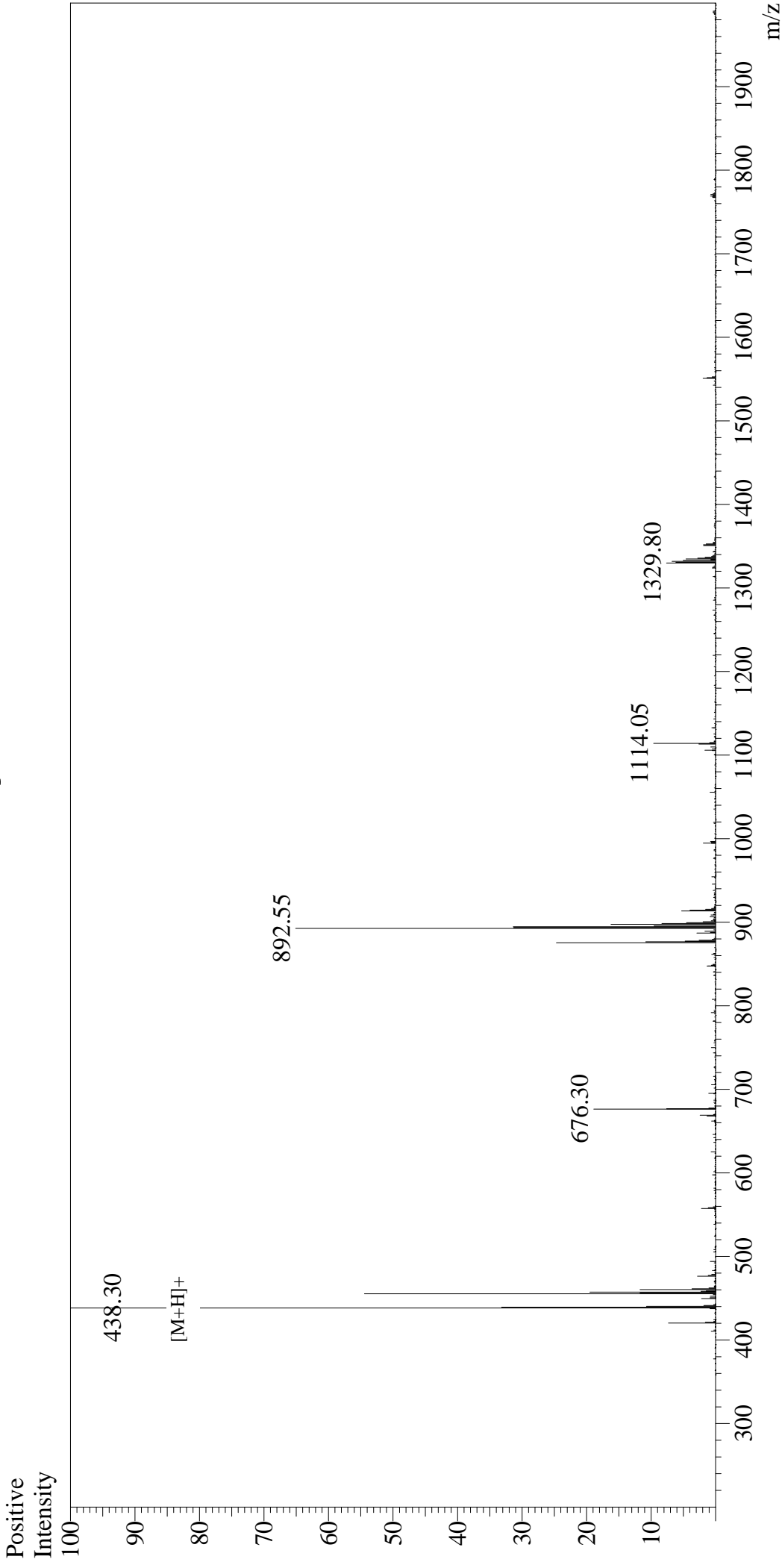


# Mass Spectrum



## Sample Information

User : Gary  
Month-Day Processed : 06/26/18  
Time Processed : 13:24:03  
Injection Volume : 0.2  
Sample Name : N-Formyl-Met-Leu-Phe  
Cat No. : RP12956  
Lot No. : PE2731806  
Theoretical MW : 437.56  
Observed MW : 437.30

## Interface

Interface : ESI  
Nebulizing Gas Flow : 1.5L/min  
CDL Temp : 250 °C  
Block Temp : 200 °C

## Interface Bias

Interface Bias : +4.5kV  
Drying Gas Flow : 5 L/min  
T.Flow : 0.2ml/min  
B.conc : 50%H2O/50%MeOH