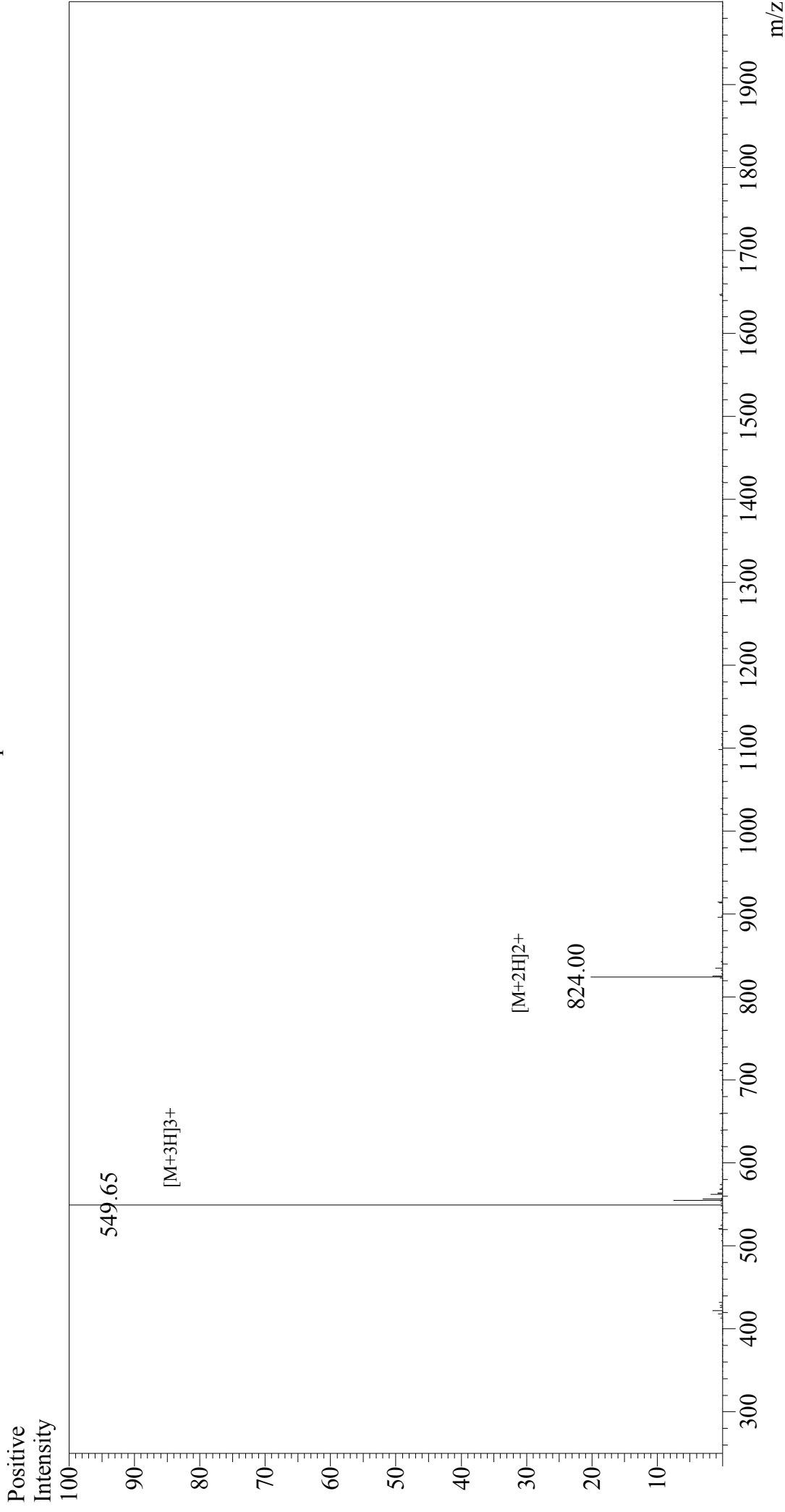


# Mass Spectrum



## Sample Information

Acquired by : Gary  
Month-Day Processed : 06/01/18  
Time Processed : 19:23:02  
Injection Volume : 0.2  
Sample Name : InsB 9-23  
Cat. No. : RP20391  
Lot. No. : PE5781805  
Theoretical MW : 1645.90  
Observed MW : 1645.95

Interface : ESI  
Nebulizing Gas Flow : 1.5L/min  
CDL Temp : 250°C  
Block Temp : 200°C

Interface Bias : +4.5 kV  
Drying Gas Flow : 5 L/min  
T.Flow : 0.2 ml/min  
B.conc : 50% H<sub>2</sub>O/50% MeOH