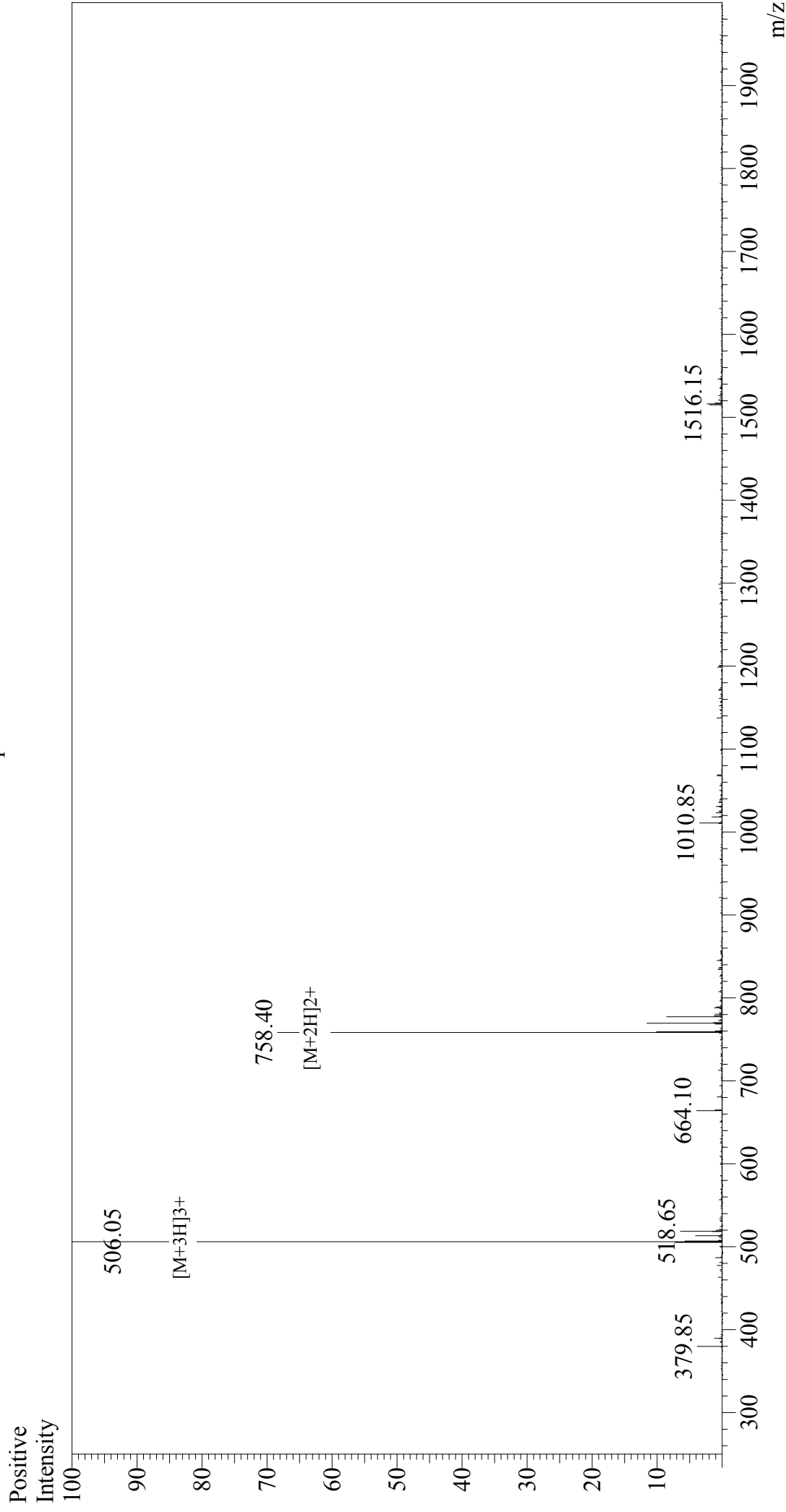


Mass Spectrum



Sample Information

Acquired by : Gary
 Month-Day Processed : 02/12/18
 Time Processed : 15:35:10
 Injection Volume : 0.2
 Sample Name : Axltdie
 Cat. No. : RP20363
 Lot. No. : PE2941802
 Theoretical MW : 1514.78
 Observed MW : 1515.15

Interface : ESI
 Nebulizing Gas Flow : 1.5L/min
 CDL Temp : 250°C
 Block Temp : 200°C

Interface Bias : +4.5 kV
 Drying Gas Flow : 5 L/min
 T.Flow : 0.2 ml/min
 B.conc : 50%H₂O/50%MeOH