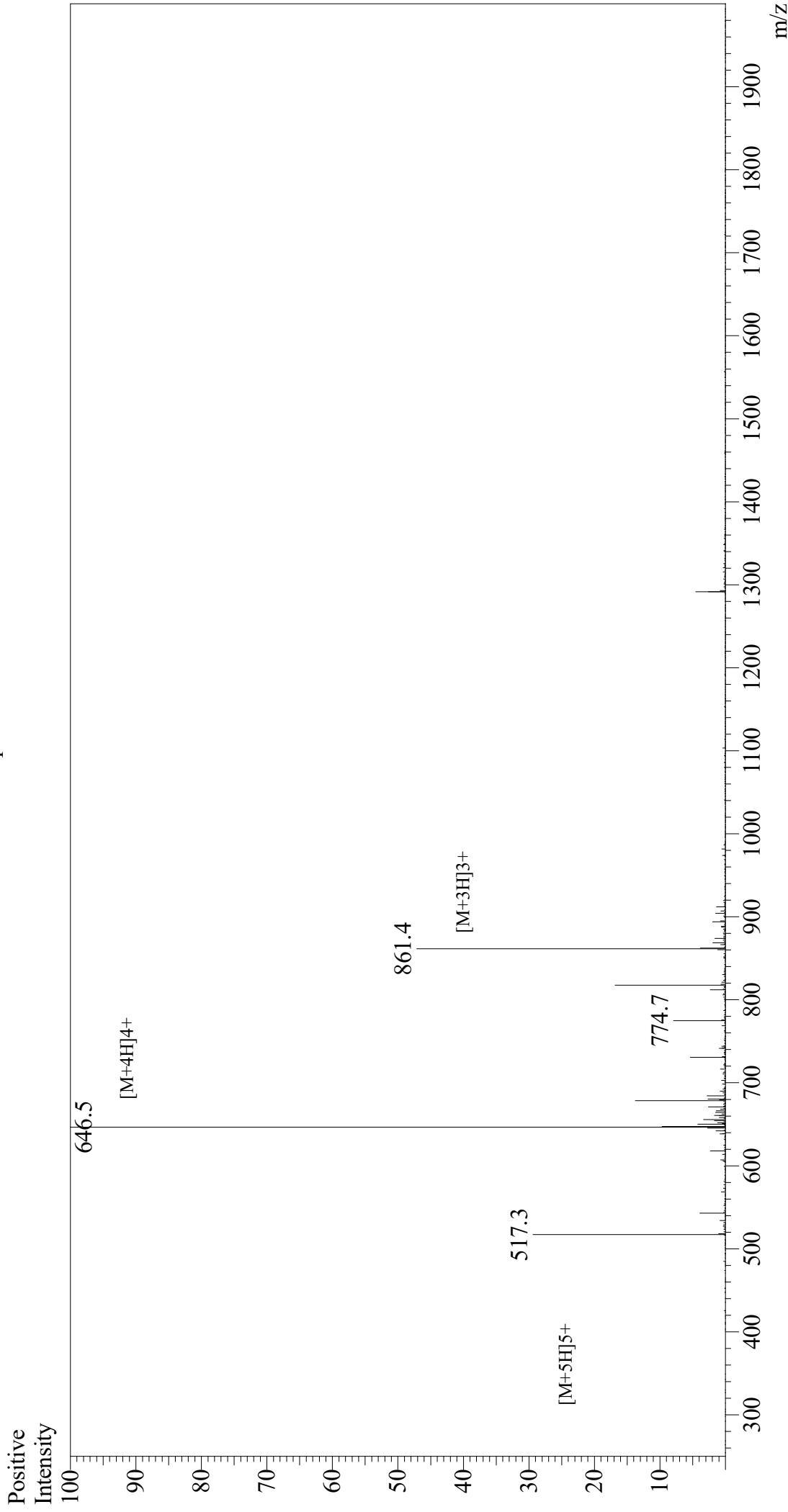


# Mass Spectrum



Sample Information  
Month-Day Processed : 07/14/21  
Time Processed : 10:44:16 PM  
Injection Volume : 0.4  
Sample Name : MOG(35-55)  
Cat No. : RP10245  
Lot No. : E4062521G  
Theoretical MW : 2581.98  
Observed MW : 2582.0

Interface : ESI  
Nebulizing Gas Flow : 1.5L/min  
CDL Temp : 250  
Block Temp : 200

Equipment : GK11010007  
Interface Bias : +3.5 kV  
Drying Gas Flow : 5 L/min  
T.Flow : 0.2 ml/min  
B.conc : 50%H2O/50%MeOH