

Sample Name : p2Ca  
 Cat. No. : RP19988  
 Lot. No. : E7437620C  
 Time Processed :20:36:38  
 Month-Day-Year Processed :03/28/2020

Pump A : 0.065% trifluoroacetic in 100% water (v/v)  
 Pump B : 0.05% trifluoroacetic in 100% acetonitrile (v/v)  
 Total Flow:1 ml/min  
 Wavelength:220 nm

Time	Unit	Command	Value	Comment
0.01	Pumps	Pump A B.Conc	5	
25.00	Pumps	Pump A B.Conc	65	
25.01	Pumps	Pump A B.Conc	95	
27.00	Pumps	Pump A B.Conc	95	
27.01	Pumps	Pump A B.Conc	5	
35.00	Pumps	Pump A B.Conc	5	
35.01	Controller	Stop		

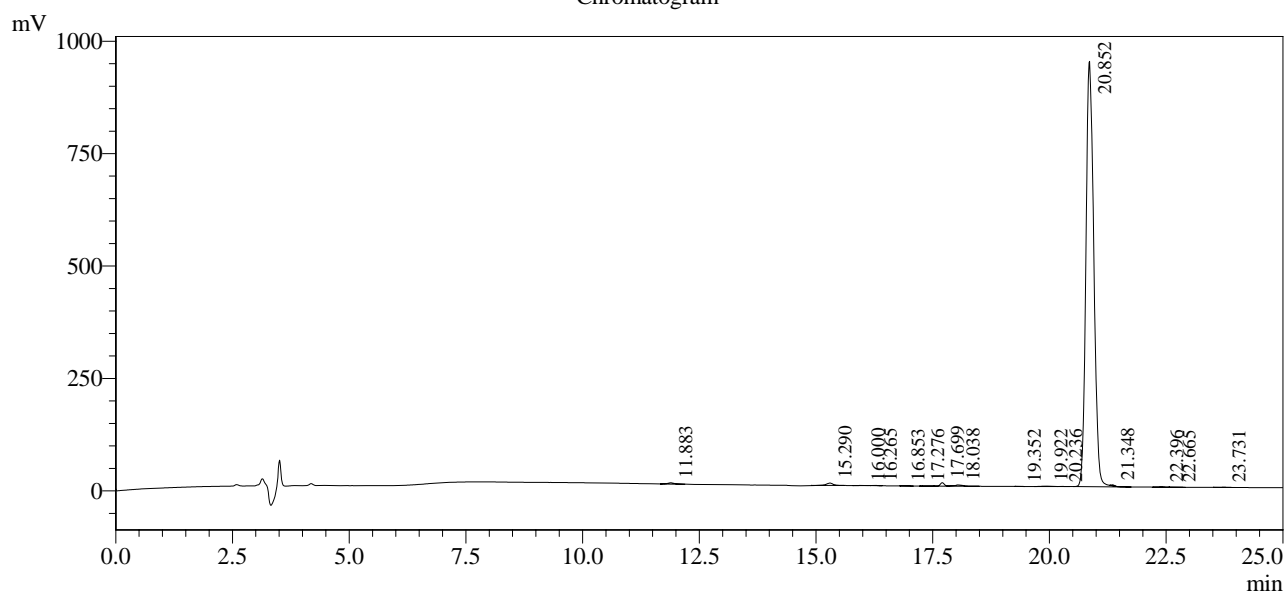
<<Column Performance>>

<Detector A>

Column : Inertsil ODS-3 4.6 x 250 mm

Equipment: GK11010009

Chromatogram



1 Det.A Ch1 / 220nm

Peak Table

Detector A Ch1 220nm

Peak#	Ret. Time	Area	Height	Area %
1	11.883	26813	2696	0.238
2	15.290	57836	5496	0.513
3	16.000	4762	499	0.042
4	16.265	3763	546	0.033
5	16.853	1111	94	0.010
6	17.276	1433	197	0.013
7	17.699	46104	7772	0.409
8	18.038	38073	2775	0.338
9	19.352	1151	202	0.010
10	19.922	12782	834	0.113
11	20.236	3248	523	0.029
12	20.852	11045509	946110	98.049
13	21.348	9130	1890	0.081
14	22.396	4984	732	0.044
15	22.665	1639	185	0.015
16	23.731	6989	499	0.062
Total		11265326	971049	100.000