

Sample Name :Gly-Arg-Gly-Asp-Ser  
 Cat No. :RP10848  
 Lot No. :E3314919I  
 Time Processed :14:13:00  
 Month-Day-Year Processed :09/29/2019

Pump A : 0.065% trifluoroacetic in 100% water (v/v)  
 Pump B : 0.05% trifluoroacetic in 100% acetonitrile (v/v)  
 Total Flow:1 ml/min  
 Wavelength:220 nm

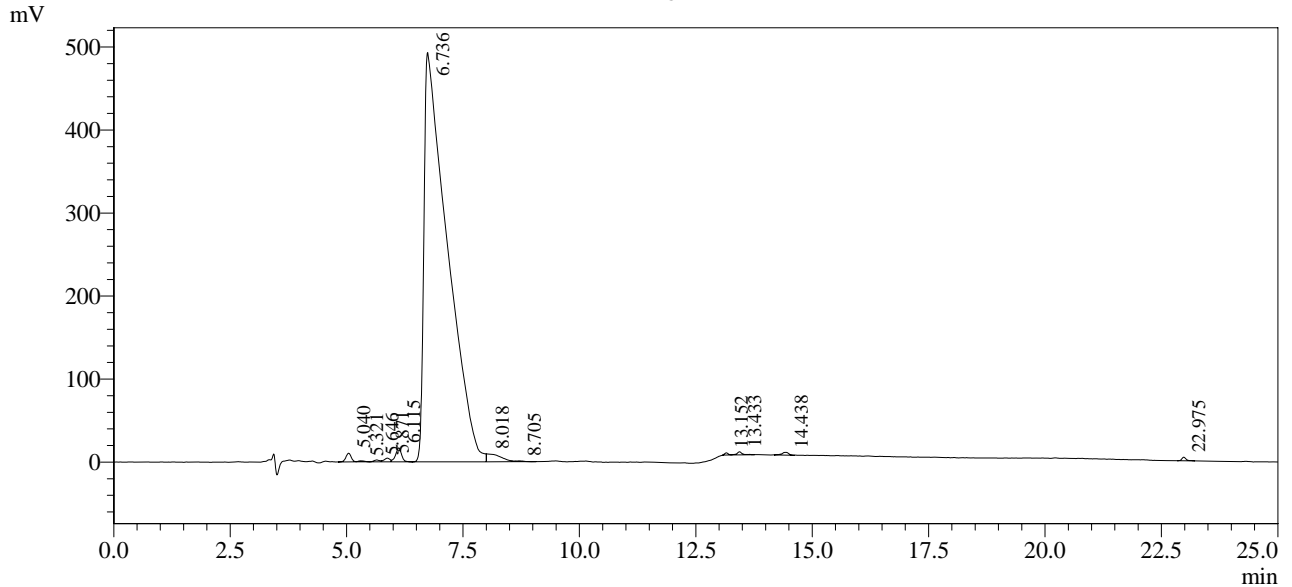
| Time  | Unit       | Command       | Value | Comment |
|-------|------------|---------------|-------|---------|
| 0.01  | Pumps      | Pump A B.Conc | 0     |         |
| 5.00  | Pumps      | Pump A B.Conc | 0     |         |
| 20.00 | Pumps      | Pump A B.Conc | 30    |         |
| 25.00 | Pumps      | Pump A B.Conc | 65    |         |
| 25.01 | Pumps      | Pump A B.Conc | 95    |         |
| 31.00 | Pumps      | Pump A B.Conc | 95    |         |
| 31.01 | Pumps      | Pump A B.Conc | 0     |         |
| 40.00 | Pumps      | Pump A B.Conc | 0     |         |
| 40.01 | Controller | Stop          |       |         |

<<Column Performance>>

<Detector A>

Column : Inertsil ODS-3 4.6 x 250 mm  
 Equipment: GR11010440

Chromatogram



1 Det.A Ch1 / 220nm

Peak Table

Detector A Ch1 220nm

| Peak# | Ret. Time | Area     | Height | Area %  |
|-------|-----------|----------|--------|---------|
| 1     | 5.040     | 83593    | 10452  | 0.470   |
| 2     | 5.321     | 12578    | 1322   | 0.071   |
| 3     | 5.646     | 21164    | 2359   | 0.119   |
| 4     | 5.871     | 38047    | 4480   | 0.214   |
| 5     | 6.115     | 147237   | 16711  | 0.828   |
| 6     | 6.736     | 17165881 | 492849 | 96.509  |
| 7     | 8.018     | 198349   | 9653   | 1.115   |
| 8     | 8.705     | 13698    | 1022   | 0.077   |
| 9     | 13.152    | 14635    | 2695   | 0.082   |
| 10    | 13.433    | 31395    | 3788   | 0.177   |
| 11    | 14.438    | 32672    | 3231   | 0.184   |
| 12    | 22.975    | 27656    | 4317   | 0.155   |
| Total |           | 17786904 | 552877 | 100.000 |