

Sample Name :Gly-Arg-Gly-Asp-Ser  
 Cat No. :RP10848  
 Lot No. :E2543320J  
 Time Processed :8:24:33 PM  
 Month-Day-Year Processed :10/17/2020

Pump A : 0.065% trifluoroacetic in 100% water (v/v)  
 Pump B : 0.05% trifluoroacetic in 100% acetonitrile (v/v)  
 Total Flow:1 ml/min  
 Wavelength:220 nm

<<LC Time Program>>

| Time  | Module     | Command       | Value |
|-------|------------|---------------|-------|
| 0.01  | Pumps      | Pump A B.Conc | 0     |
| 5.00  | Pumps      | Pump A B.Conc | 0     |
| 20.00 | Pumps      | Pump A B.Conc | 30    |
| 25.00 | Pumps      | Pump A B.Conc | 65    |
| 25.01 | Pumps      | Pump A B.Conc | 95    |
| 27.00 | Pumps      | Pump A B.Conc | 95    |
| 27.01 | Pumps      | Pump A B.Conc | 0     |
| 35.00 | Pumps      | Pump A B.Conc | 0     |
| 35.01 | Controller | Stop          |       |

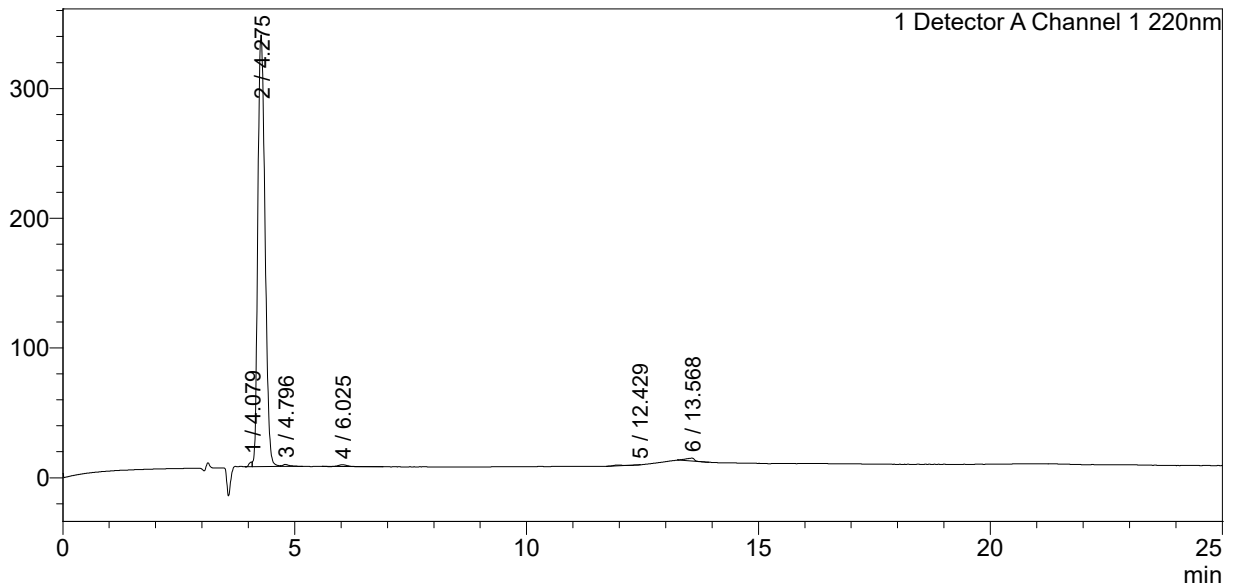
<<Column Performance>>

<Detector A>

Column :Inertsil ODS-3 4.6 x 250 mm  
 Equipment: ZJ19010141

<Chromatogram>

mV



<Peak Table>

Detector A Channel 1 220nm

| Peak# | Ret. Time | Area    | Height | Area%   |
|-------|-----------|---------|--------|---------|
| 1     | 4.079     | 17143   | 3598   | 0.467   |
| 2     | 4.275     | 3584030 | 332920 | 97.674  |
| 3     | 4.796     | 15769   | 1566   | 0.430   |
| 4     | 6.025     | 16185   | 1384   | 0.441   |
| 5     | 12.429    | 6483    | -15    | 0.177   |
| 6     | 13.568    | 29754   | 2303   | 0.811   |
| Total |           | 3669365 | 341756 | 100.000 |