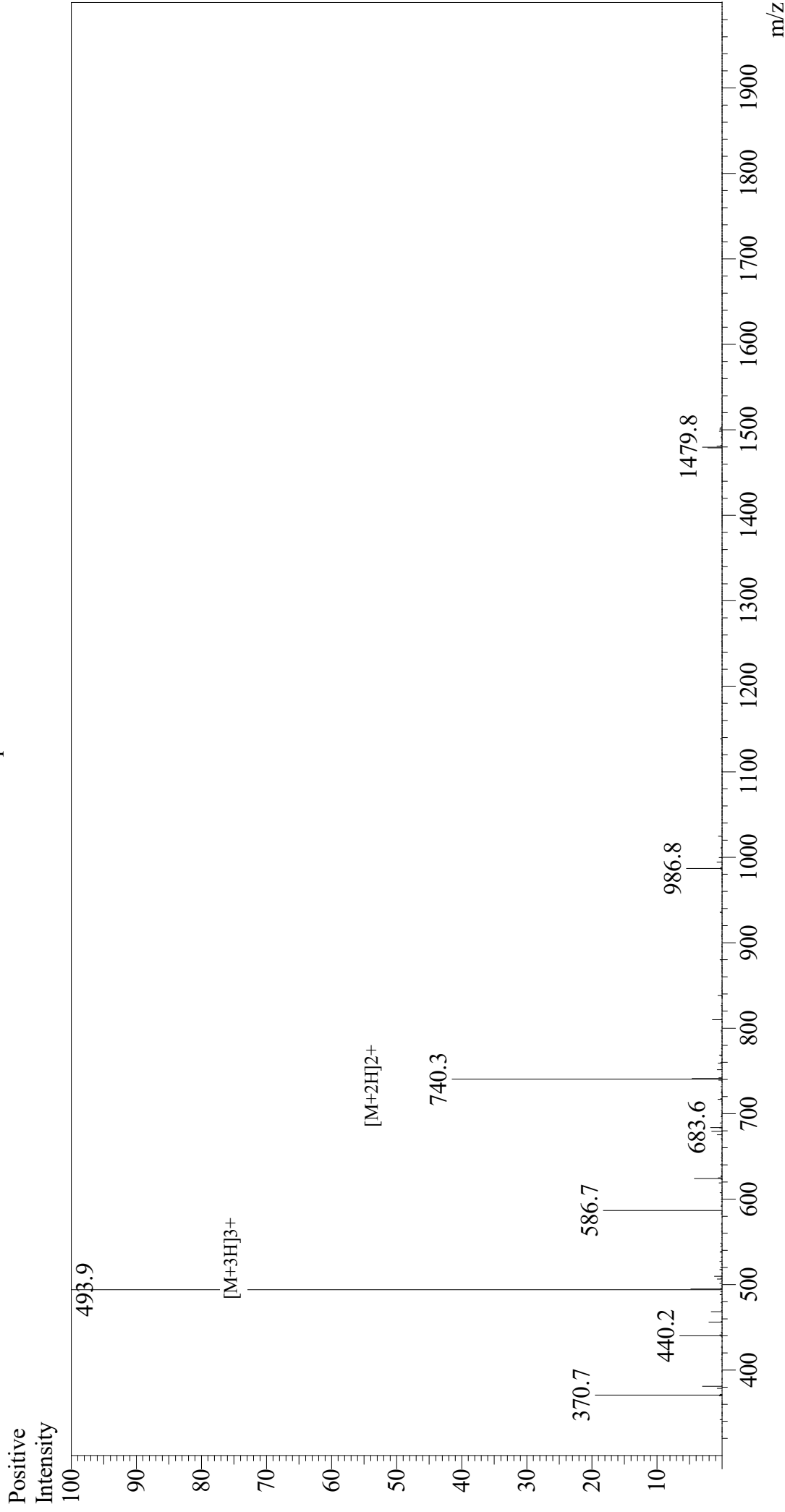


# Mass Spectrum



## Sample Information

Acquired by : Gary  
Month-Day Processed : 09/20/19  
Time Processed : 05:25:07 PM  
Injection Volume : 0.3  
Sample Name : Mastoparan  
Cat. No. : RP10465  
Lot. No. : E4806019I  
Theoretical MW : 1478.80  
Observed MW : 1478.7

## Interface

Interface : ESI  
Nebulizing Gas Flow : 1.5L/min  
CDL Temp : 250  
Block Temp : 200

## Equipment

Equipment : GK11010007  
Interface Bias : +4.5 kV  
Drying Gas Flow : 5 L/min  
T.Flow : 0.2 ml/min  
B.conc : 50% $\text{H}_2\text{O}$ /50% $\text{MeOH}$