

Sample Name: Arg-Gly-Asp-Ser
 Cat No. :RP10861
 Lot No. : E6866320H
 Time Processed: 9:23:12 AM
 Month-Day-Year Processed :08/06/2020

Pump A : 0.065% trifluoroacetic in 100% water (v/v)
 Pump B : 0.05% trifluoroacetic in 100% acetonitrile (v/v)
 Total Flow: 1 ml/min
 Wavelength: 220 nm

<<LC Time Program>>

| Time | Module | Command | Value |
|-------|------------|-----------------|-------|
| 0.01 | Pumps | Solvent B Conc. | 0 |
| 5.00 | Pumps | Solvent B Conc. | 0 |
| 20.00 | Pumps | Solvent B Conc. | 30 |
| 25.00 | Pumps | Solvent B Conc. | 65 |
| 25.01 | Pumps | Solvent B Conc. | 95 |
| 27.00 | Pumps | Solvent B Conc. | 95 |
| 27.01 | Pumps | Solvent B Conc. | 0 |
| 33.00 | Pumps | Solvent B Conc. | 0 |
| 33.01 | Controller | Stop | |

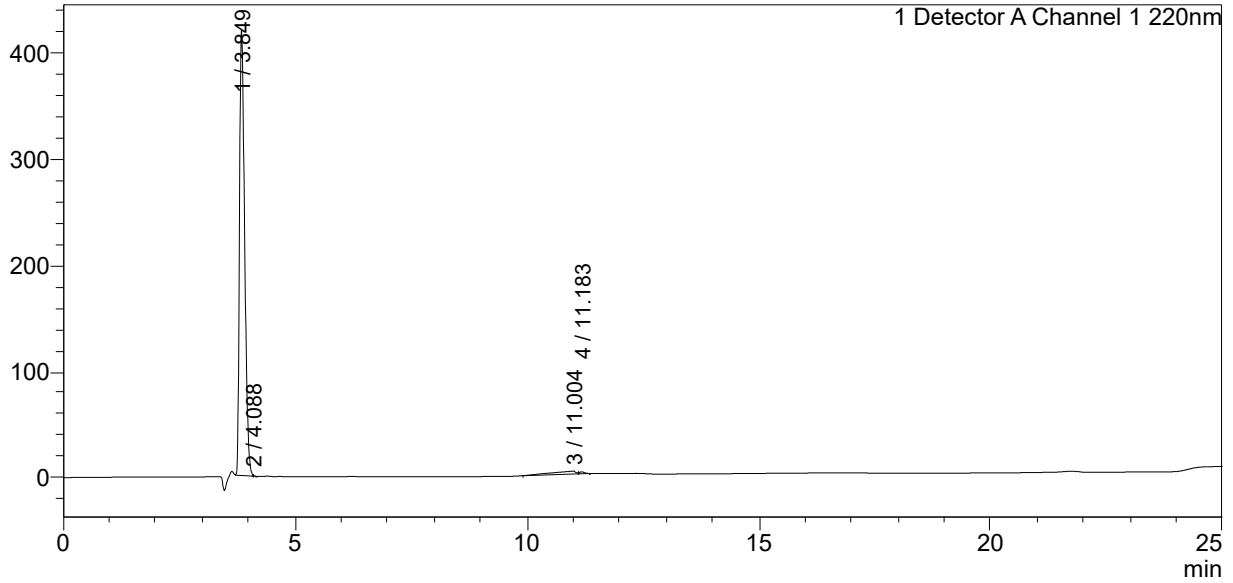
<<Column Performance>>

<Detector A>

Column : Alltima™ C18 4.6 x 250 mm
 Equipment: ZJ19010325

<Chromatogram>

mV



<Peak Table>

Detector A Channel 1 220nm

| Peak# | Ret. Time | Area | Height | Area% |
|-------|-----------|---------|--------|---------|
| 1 | 3.849 | 3214925 | 420810 | 96.410 |
| 2 | 4.088 | 2318 | 1705 | 0.070 |
| 3 | 11.004 | 105024 | 2659 | 3.149 |
| 4 | 11.183 | 12386 | 1752 | 0.371 |
| Total | | 3334652 | 426926 | 100.000 |