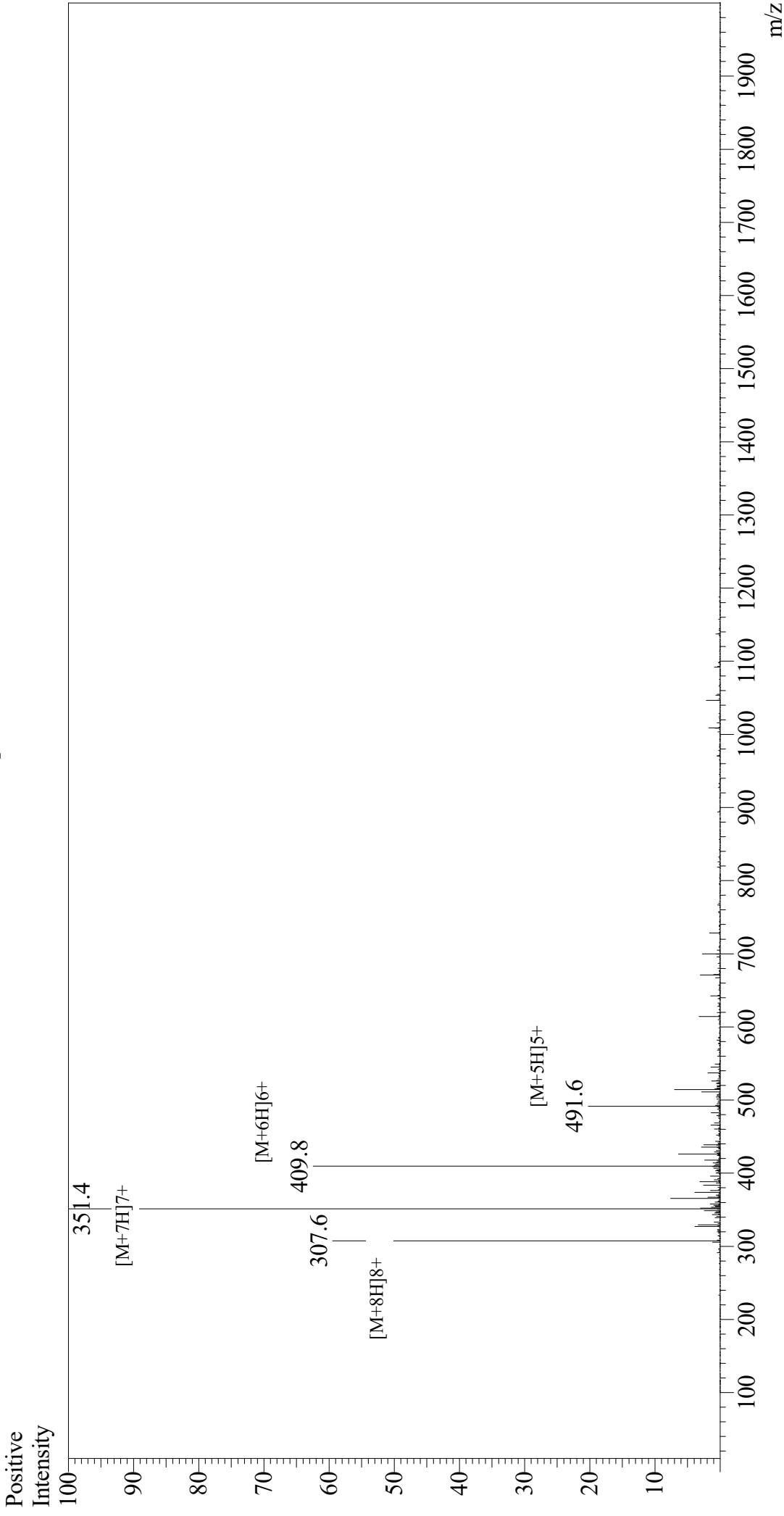


# Mass Spectrum



## Sample Information

Acquired by : Gary  
 Month-Day Processed : 01/23/20  
 Time Processed : 01:56:09 PM  
 Injection Volume : 0.5  
 Sample Name : sgp91 ds-tat Peptide 2, scrambled  
 Cat. No. : RP20436  
 Lot. No. : E3644720A  
 Theoretical MW : 2453.00  
 Observed MW : 2452.8

Interface : ESI  
 Nebulizing Gas Flow : 1.5L/min  
 CDL Temp : 250  
 Block Temp : 200

Equipment : GK11010007  
 Interface Bias : +4.5 kV  
 Drying Gas Flow : 5 L/min  
 T.Flow : 0.2 ml/min  
 B.conc : 50%H2O/50%MeOH