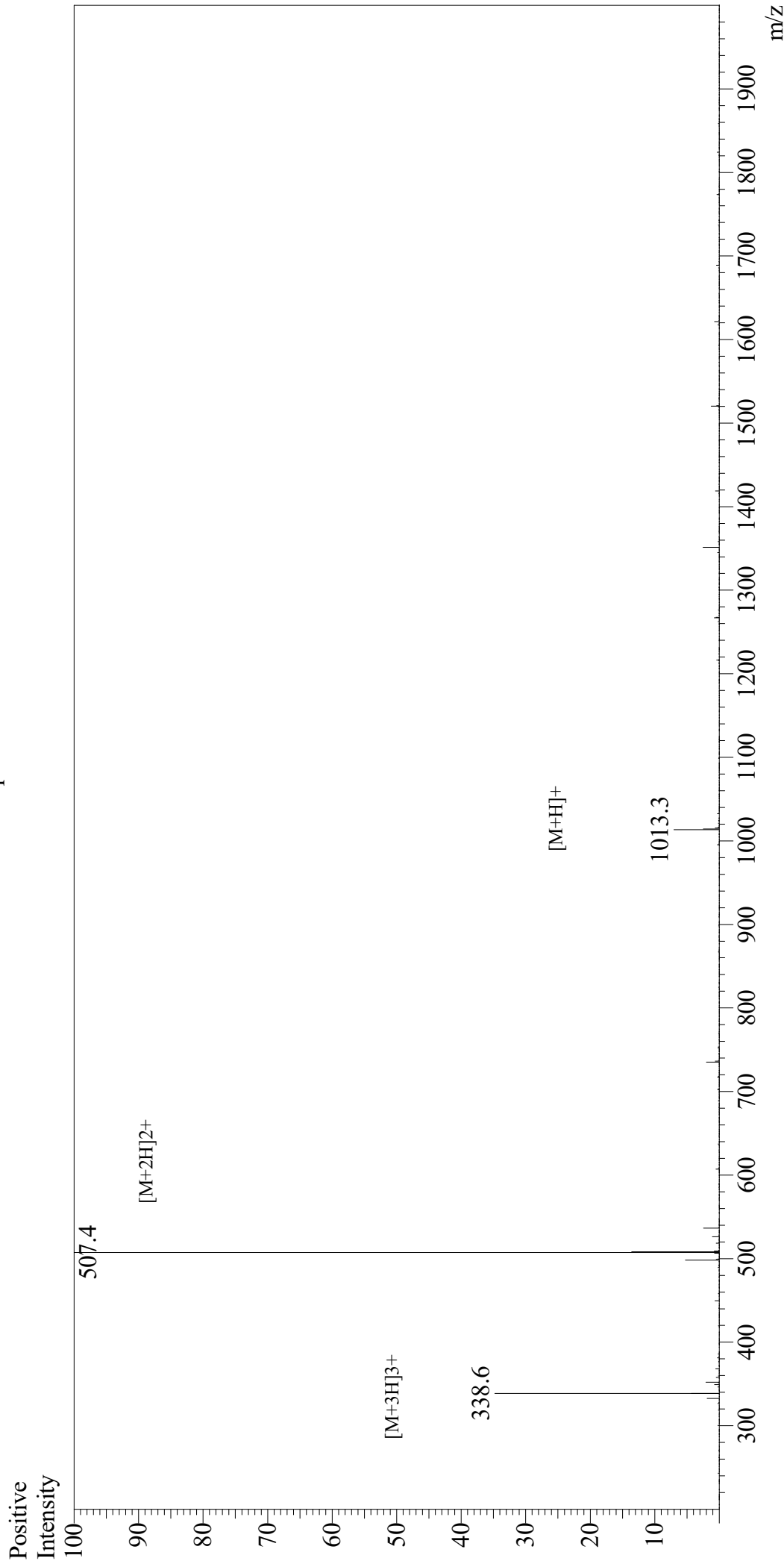


Mass Spectrum



Sample Information

User : Gary
Month-Day Processed : 10/10/19
Time Processed : 07:34:10 PM
Injection Volume : 0.4
Sample Name : DYKDDDDK Peptide
Cat No. : RP10586
Lot No. : E5565419J
Theoretical MW : 1012.97
Observed MW : 1012.8

Interface : ESI
Nebulizing Gas Flow : 1.5L/min
CDL Temp : 250
Block Temp : 200

Equipment : GK11010007
Interface Bias : +4.5kV
Drying Gas Flow : 5 L/min
T.Flow : 0.2ml/min
B.conc : 50%H₂O/50%MeOH