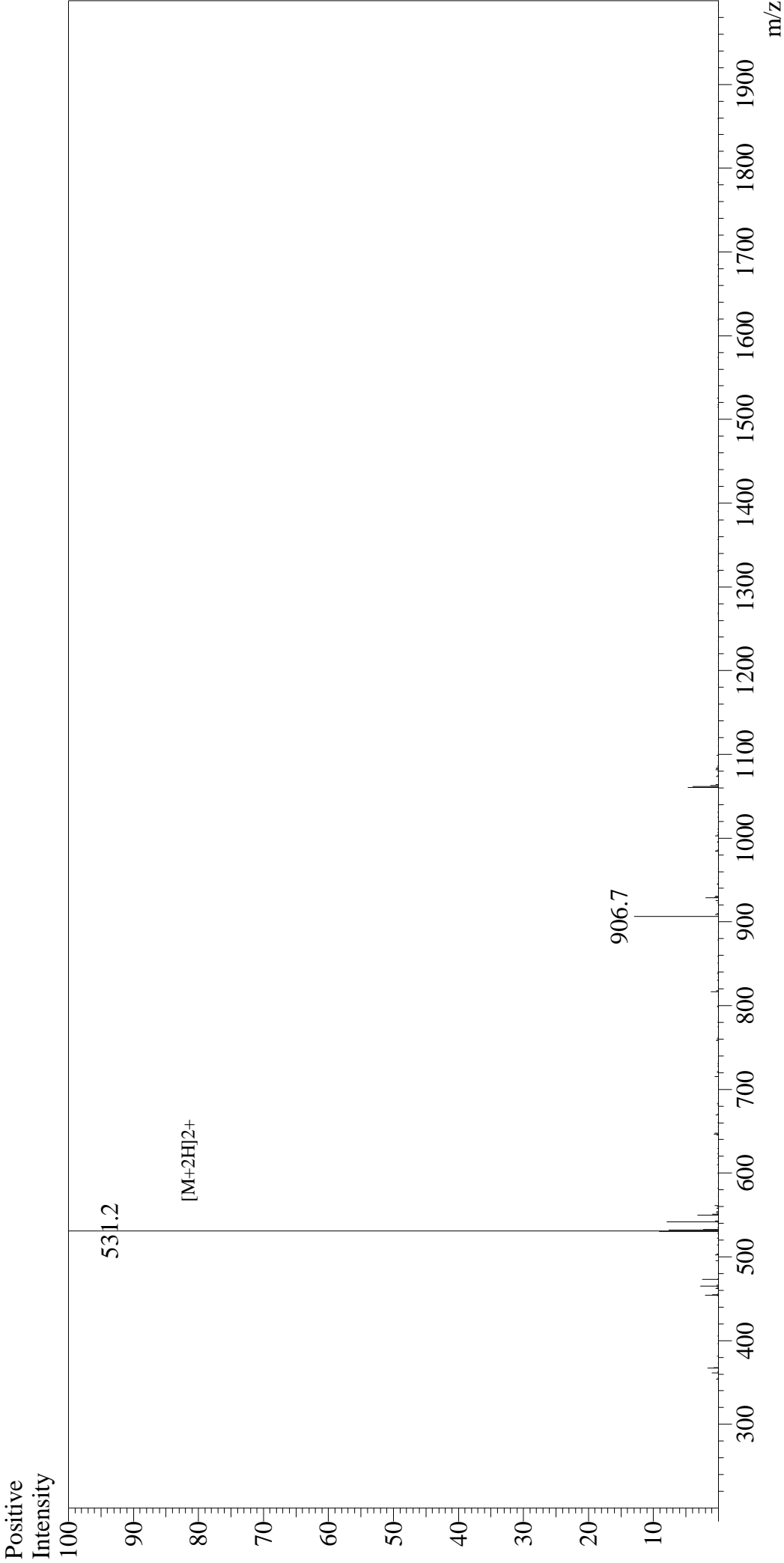


Mass Spectrum



Sample Information

User :	Gary	Interface	:ESI	Interface Bias	:+4.5kV
Month-Day Processed :	07/25/18	Nebulizing Gas Flow	:1.5L/min	Drying Gas Flow	:5 L/min
Time Processed :	21:07:43	CDL Temp	:250°C	T.Flow	:0.2ml/min
Injection Volume :	0.2	Block Temp	:200°C	B.conc	:50%H2O/50%MeOH
Sample Name :	??-Amyloid (35-25)				
Cat No. :	RP20185				
Lot No. :	PE8381807				
Theoretical MW :	1060.30				
Observed MW :	1060.4				