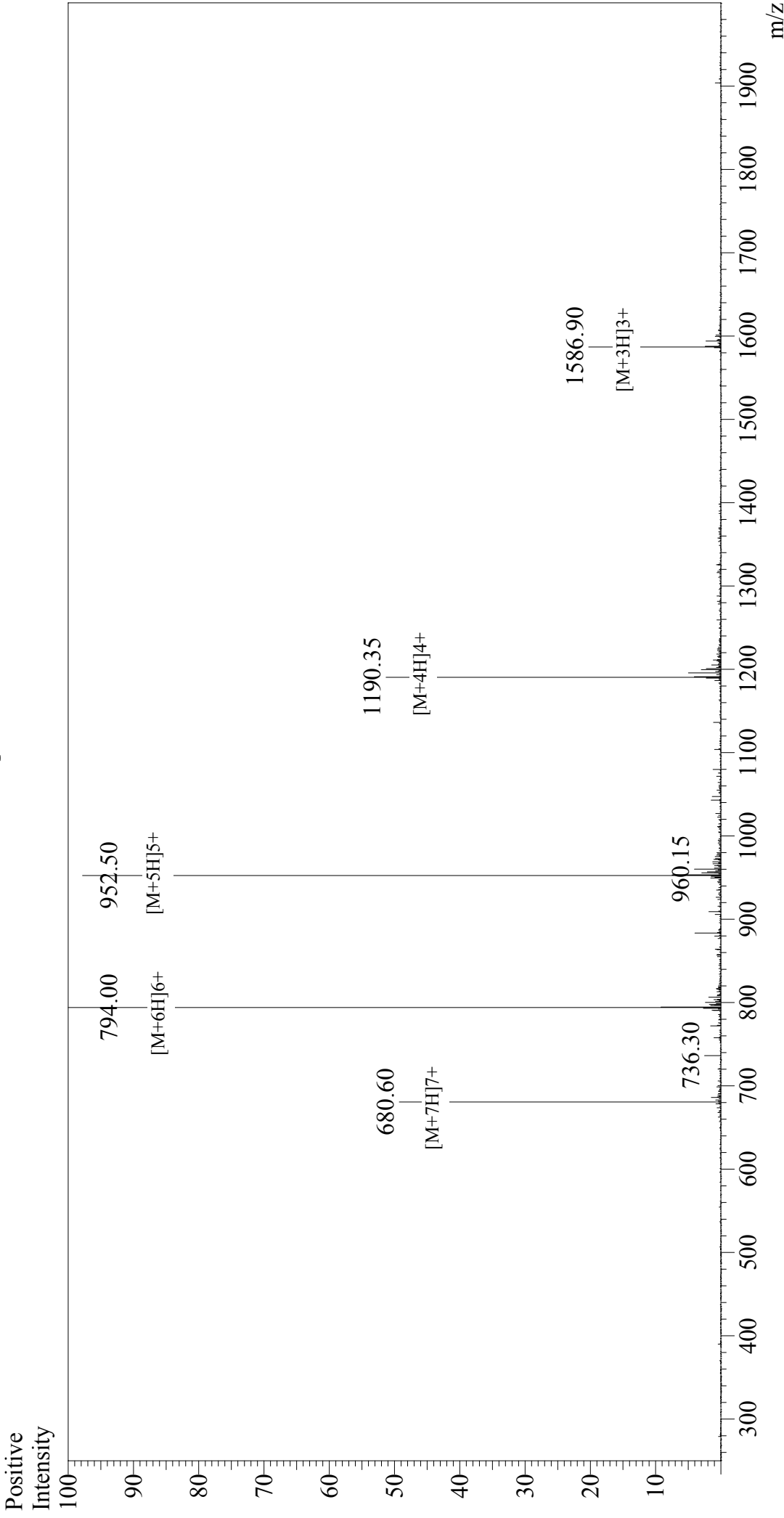


# Mass Spectrum



## Sample Information

Acquired by : Gary  
 Month-Day Processed : 10/20/17  
 Time Processed : 11:39:24  
 Injection Volume : 0.2  
 Sample Name : Corticotropin Releasing Factor, human, rat  
 Cat. No. : RP10982  
 Lot. No. : PE6891710  
 Theoretical MW : 4757.45  
 Observed MW : 4758.00

Interface : ESI  
 Nebulizing Gas Flow : 1.5L/min  
 CDL Temp : 250°C  
 Block Temp : 200°C

Interface Bias : +4.5 kV  
 Drying Gas Flow : 5 L/min  
 T.Flow : 0.2 ml/min  
 B.conc : 50%H2O/50%MeOH