

Sample Name :Corticotropin Releasing Factor, human, rat
 Cat. No. : RP10982
 Lot. No. :PE6891710

Pump A : 0.065% trifluoroacetic in 100% water (v/v)
 Pump B : 0.05% trifluoroacetic in 100% acetonitrile (v/v)
 Total Flow:1 ml/min
 Wavelength:220 nm

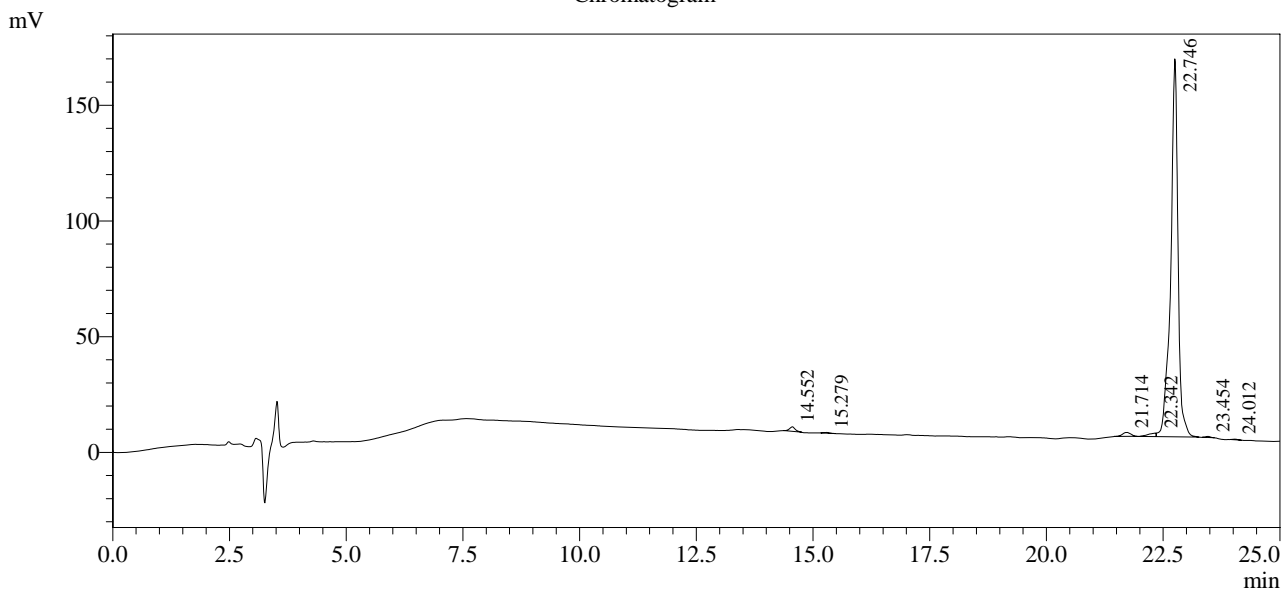
| Time | Unit | Command | Value | Comment |
|-------|------------|--------------|-------|---------|
| 0.01 | Pumps | Pump B Conc. | 5 | |
| 25.00 | Pumps | Pump B Conc. | 65 | |
| 25.01 | Pumps | Pump B Conc. | 95 | |
| 31.00 | Pumps | Pump B Conc. | 95 | |
| 31.01 | Pumps | Pump B Conc. | 5 | |
| 40.00 | Pumps | Pump B Conc. | 5 | |
| 40.01 | Controller | Stop | | |

<<Column Performance>>

<Detector A>

Column : Alltima™ C18 4.6 x 250 mm

Chromatogram



I Det.A Ch1 / 220nm

Peak Table

Detector A Ch1 220nm

| Peak# | Ret. Time | Area | Height | Area % |
|-------|-----------|---------|--------|---------|
| 1 | 14.552 | 16555 | 1963 | 0.894 |
| 2 | 15.279 | 2238 | 306 | 0.121 |
| 3 | 21.714 | 21343 | 1711 | 1.152 |
| 4 | 22.342 | 18494 | 1566 | 0.998 |
| 5 | 22.746 | 1788944 | 163335 | 96.556 |
| 6 | 23.454 | 3125 | 482 | 0.169 |
| 7 | 24.012 | 2060 | 246 | 0.111 |
| Total | | 1852759 | 169609 | 100.000 |