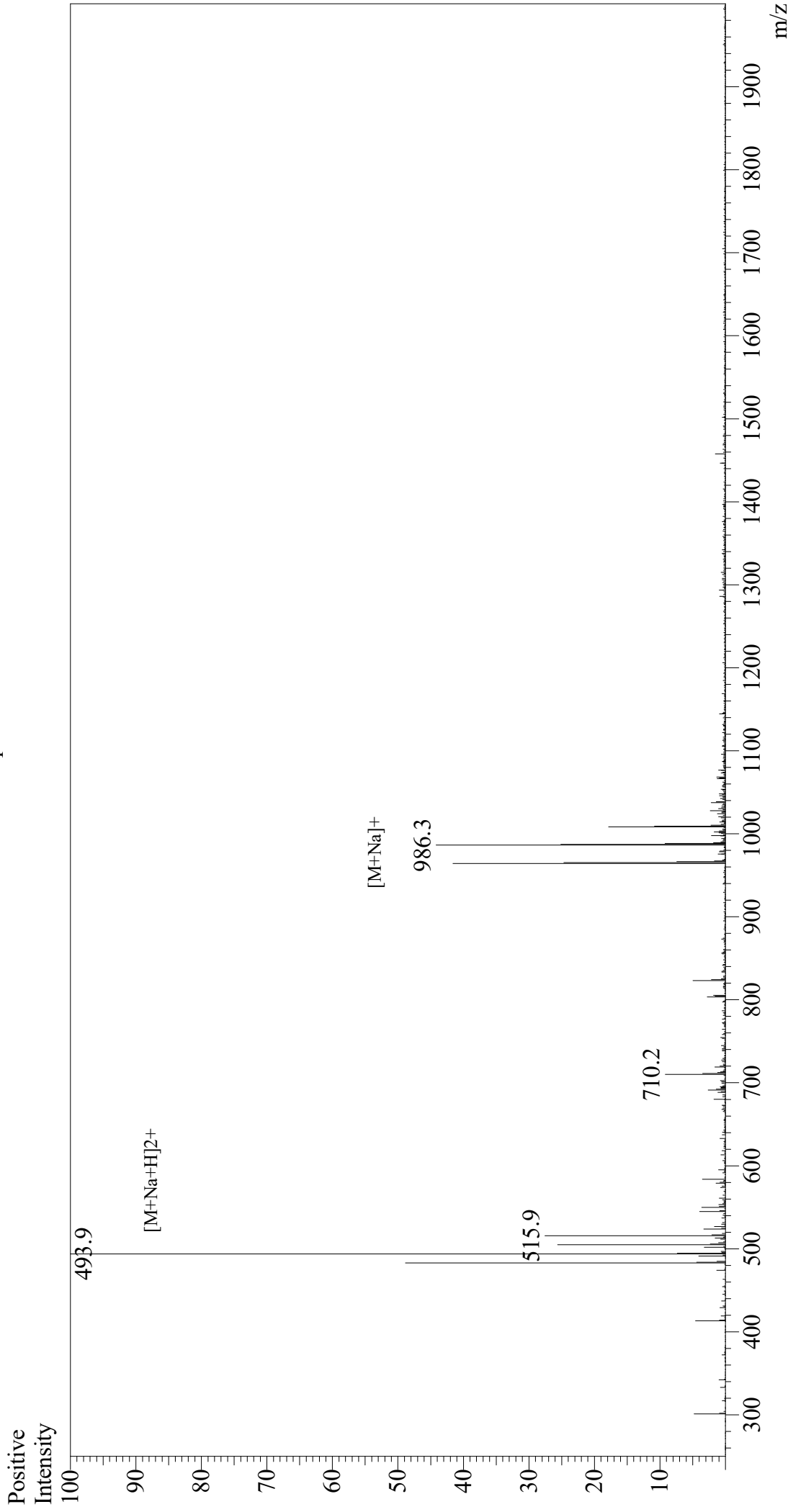


Mass Spectrum



Sample Information

Month-Day Processed : 11/29/20
Time Processed : 04:12:38 PM
Injection Volume : 0.4
Sample Name : Carcinoembryonic Antigen (CEA)
Cat No. : RP20328
Lot No. : E2734720K
Theoretical MW : 964.10
Observed MW : 964.8

Interface : ESI
Nebulizing Gas Flow : 1.5L/min
CDL Temp : 250
Block Temp : 200

Equipment : GK11010007
Interface Bias : +3.5 kV
Drying Gas Flow : 5 L/min
T.Flow : 0.2 ml/min
B.conc : 50%H₂O/50%MeOH