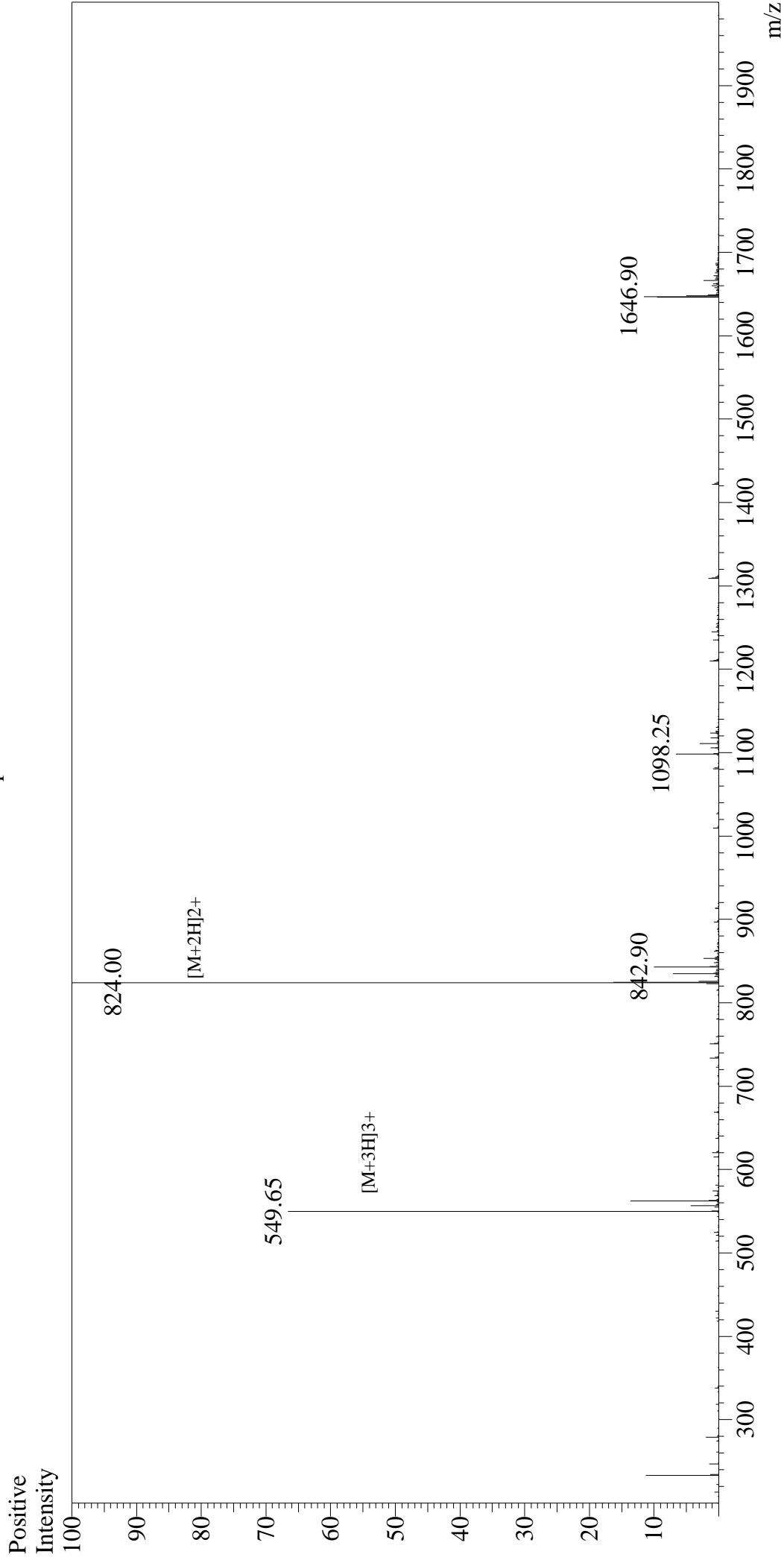


Mass Spectrum



Sample Information

User : Gary
Month-Day Processed : 06/14/17
Time Processed : 16:31:15
Injection Volume : 0.2
Sample Name : InsB 9-23
Cat No. : RP20391
Lot No. : PE0691706
Theoretical MW : 1645.90
Observed MW : 1646.00

Interface : ESI
Nebulizing Gas Flow : 1.5L/min
CDL Temp : 250°C
Block Temp : 200°C

Interface Bias : +4.5kV
Drying Gas Flow : 5 L/min
T.Flow : 0.2ml/min
B.conc : 50%H₂O/50%MeOH