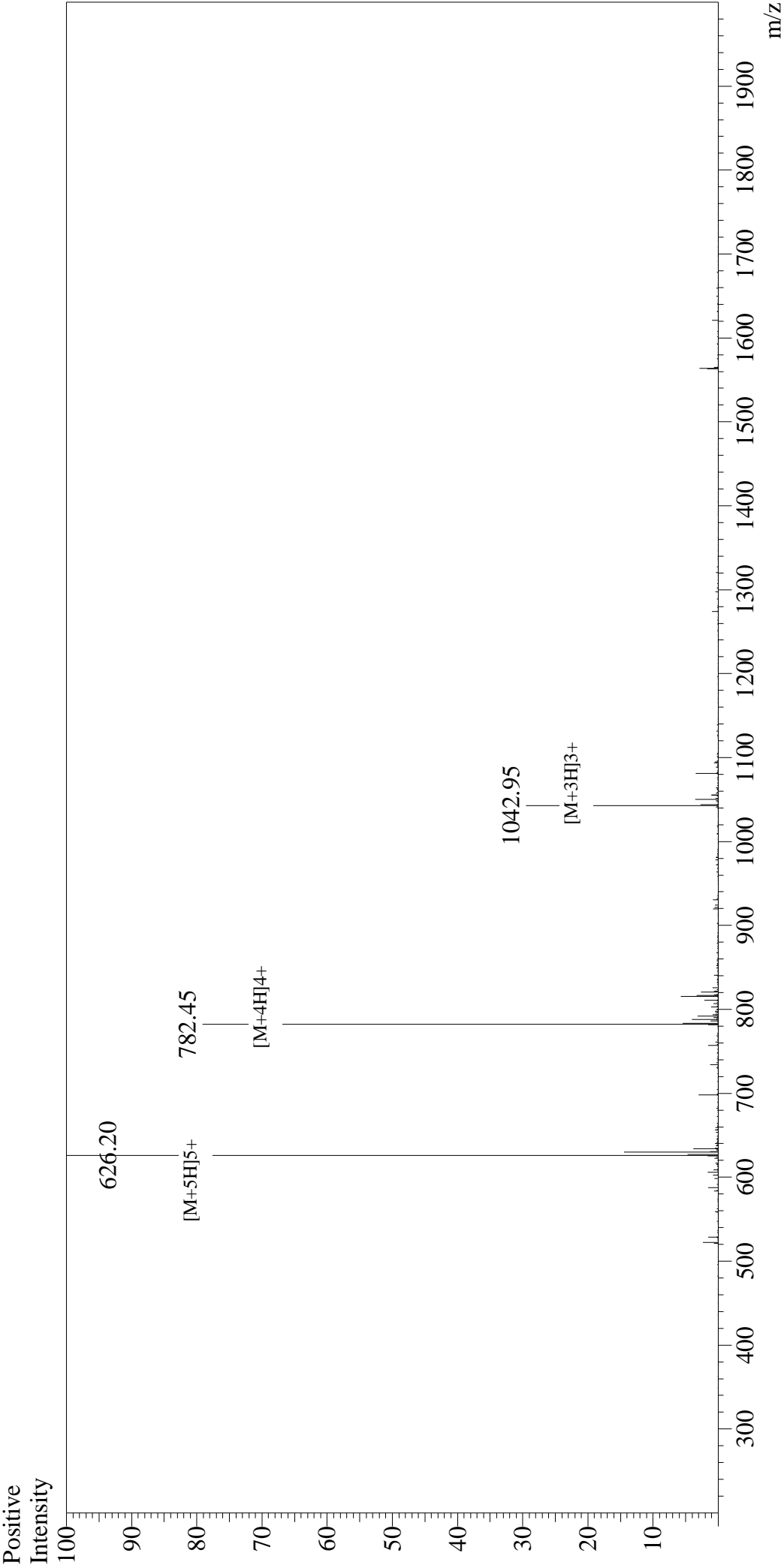


Mass Spectrum



Sample Information

User :	Gary	Interface :	ESI	Interface Bias :	+4.5kV
Month-Day Processed :	04/18/18	Nebulizing Gas Flow :	1.5L/min	Drying Gas Flow :	5 L/min
Time Processed :	11:42:33	CDL Temp :	250°C	T.Flow :	0.2ml/min
Injection Volume :	0.2	Block Temp :	200°C	B.conc :	50%H2O/50%MeOH
Sample Name :	CGRP (8-37), human				
Cat No. :	RP11089				
Lot No. :	PE7791804				
Theoretical MW :	3125.59				
Observed MW :	3126.00				