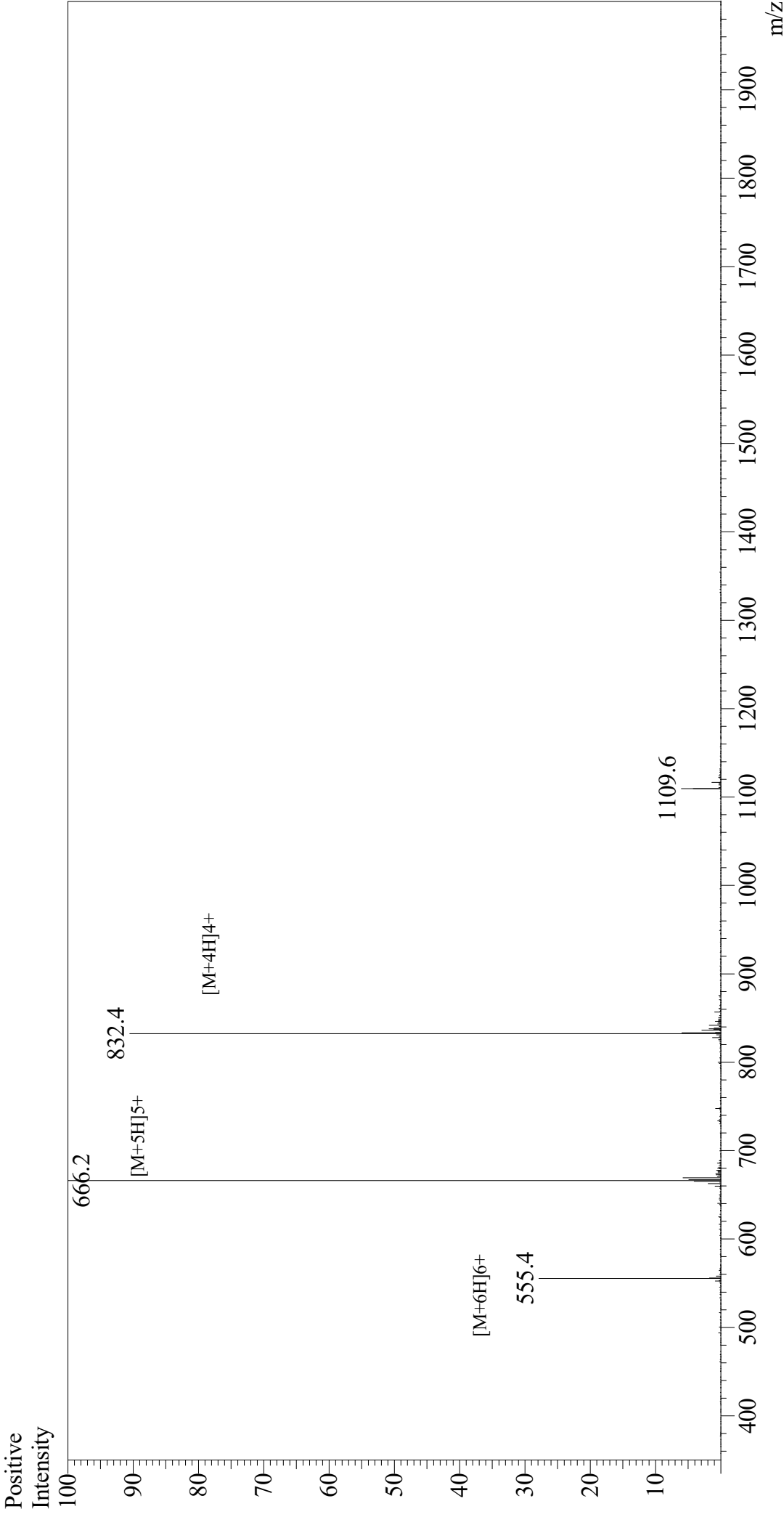


Mass Spectrum



Sample Information
Month-Day Processed : 08/26/21
Time Processed : 23:22:28
Injection Volume : 0.2
Sample Name : VIP, human, ovine, porcine, rat
Cat. No. : RP10085
Lot. No. : E1513721H
Theoretical MW : 3325.80
Observed MW : 3326.0

Interface : ESI
Nebulizing Gas Flow : 1.5L/min
CDL Temp : 250
Block Temp : 200

Equipment : ZJ21010035
Interface Bias : +4.5 kV
Drying Gas Flow : 5 L/min
T.Flow : 0.2 ml/min
B.conc : 50% H₂O/50% MeOH