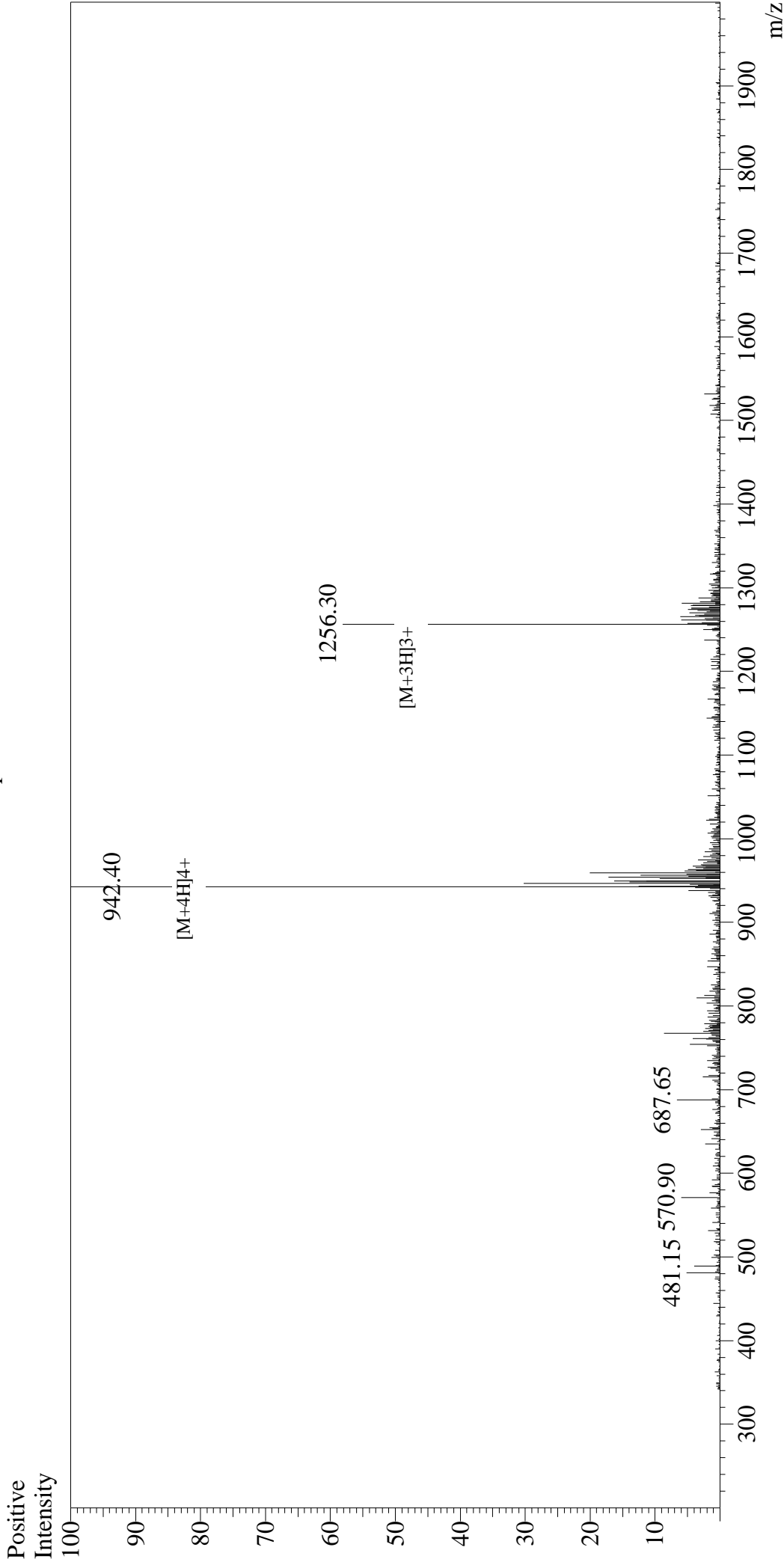


Mass Spectrum



Sample Information

User : Gary
Month-Day Processed : 07/18/18
Time Processed : 17:42:54
Injection Volume : 0.5
Sample Name : Glucagon-Like Peptide (GLP) II, human
Cat No. : RPI0769
Lot No. : PE6751803
Theoretical MW : 3766.20
Observed MW : 3765.60

Interface : ESI
Nebulizing Gas Flow : 1.5L/min
CDL Temp : 250°C
Block Temp : 200°C

Interface Bias : +4.5kV
Drying Gas Flow : 5 L/min
T.Flow : 0.2ml/min
B.conc : 50%H2O/50%MeOH