

Sample Name :PACAP (1-38), human, ovine, rat
 Cat No. :RP10335
 Lot No. :E6042520C
 Time Processed :8:23:44
 Month-Day-Year Processed :03/27/2020

Pump A : 0.065% trifluoroacetic in 100% water (v/v)
 Pump B : 0.05% trifluoroacetic in 100% acetonitrile (v/v)
 Total Flow:1 ml/min
 Wavelength:220 nm

<<LC Time Program>>

Time	Module	Command	Value
0.01	Pumps	Solvent B Conc.	5
25.00	Pumps	Solvent B Conc.	65
25.01	Pumps	Solvent B Conc.	95
27.00	Pumps	Solvent B Conc.	95
27.01	Pumps	Solvent B Conc.	5
35.00	Pumps	Solvent B Conc.	5
35.01	Controller	Stop	

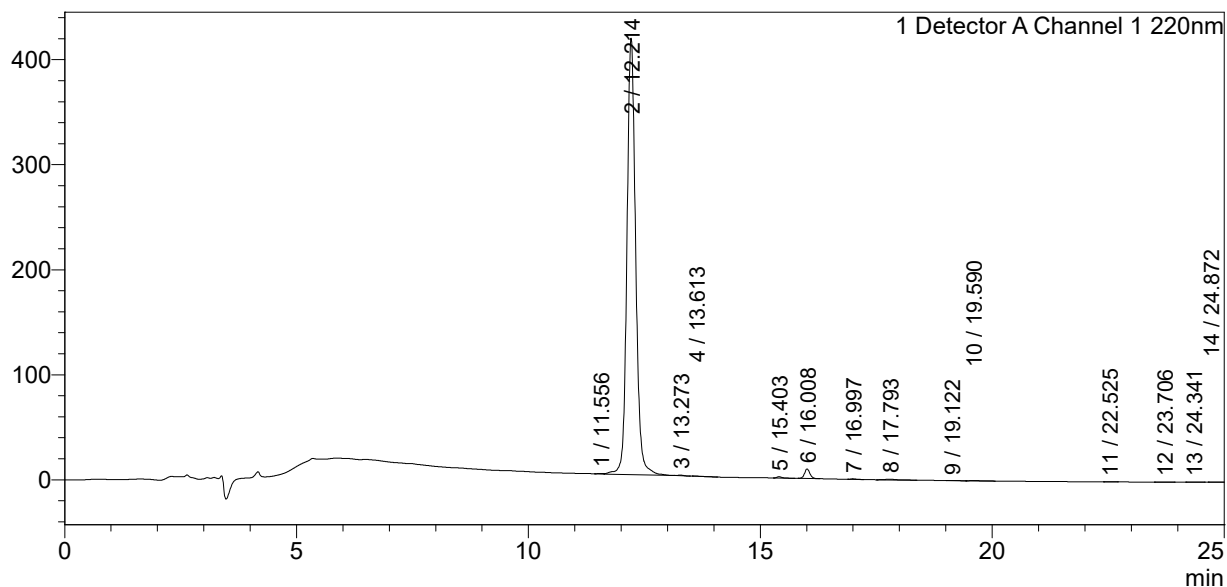
<<Column Performance>>

<Detector A>

Column : AlltimaTM C18 4.6 x 250 mm
 Equipment:ZJ19010141

<Chromatogram>

mV



<Peak Table>

Detector A Channel 1 220nm

Peak#	Ret. Time	Area	Height	Area%
1	11.556	3682	410	0.066
2	12.214	5426489	415699	97.803
3	13.273	5857	698	0.106
4	13.613	3073	240	0.055
5	15.403	9071	1283	0.163
6	16.008	73055	9052	1.317
7	16.997	4041	561	0.073
8	17.793	11671	718	0.210
9	19.122	1376	96	0.025
10	19.590	3960	205	0.071
11	22.525	1028	114	0.019
12	23.706	1665	137	0.030
13	24.341	2122	154	0.038
14	24.872	1286	129	0.023
Total		5548377	429495	100.000