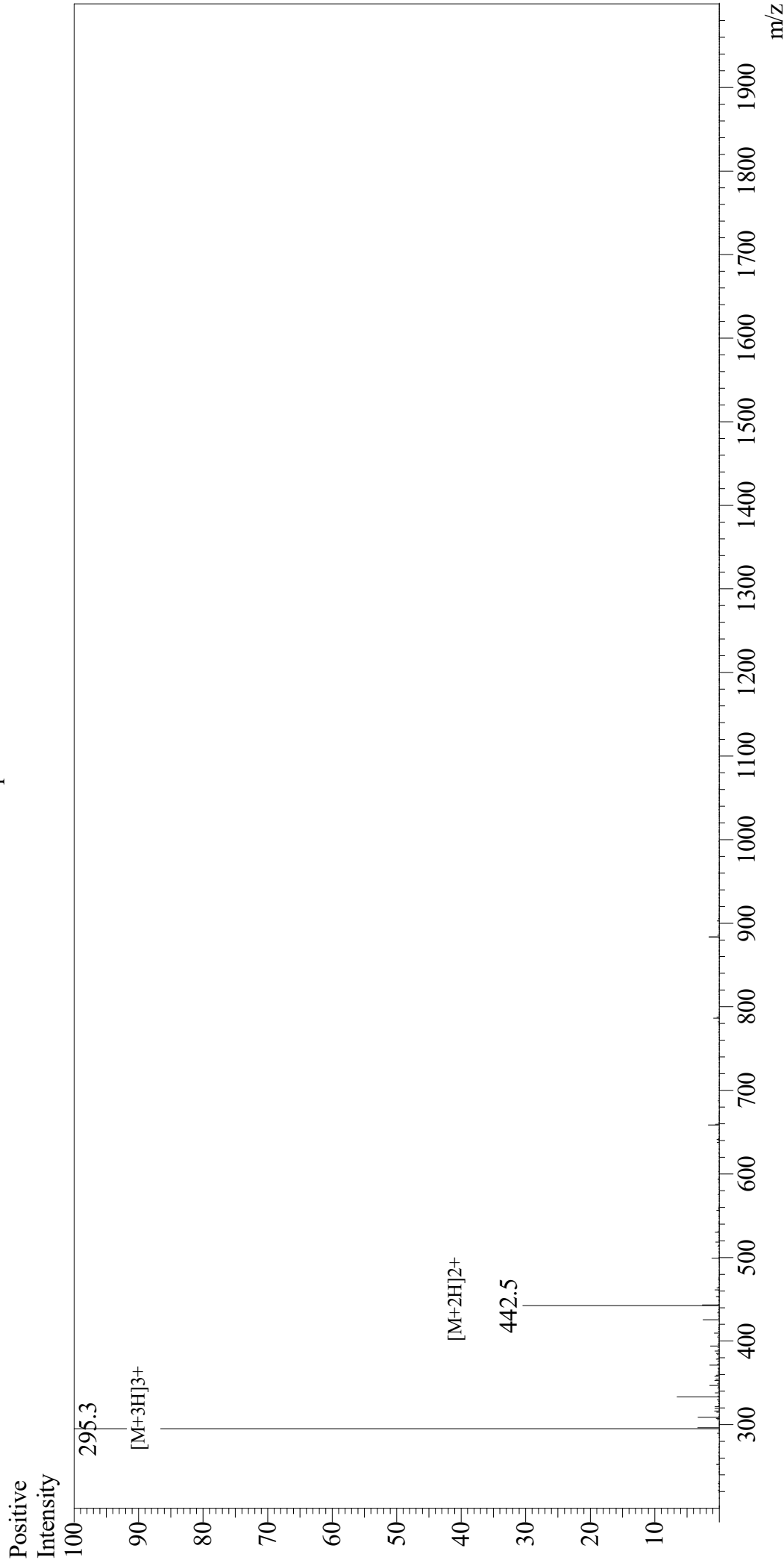


Mass Spectrum



Sample Information

User : Gary
Month-Day Processed : 10/03/19
Time Processed : 07:01:48 AM
Injection Volume : 0.3
Sample Name : Nuclear Localization Signal Peptide
Cat No. : RP20292
Lot No. : E7061519J
Theoretical MW : 883.15
Observed MW : 882.9

Equipment : GK11010007
Interface Bias : +4.5kV
Drying Gas Flow : 5 L/min
T.Flow : 0.2ml/min
B.conc : 50%H2O/50%MeOH

Interface : ESI
Nebulizing Gas Flow : 1.5L/min
CDL Temp : 250
Block Temp : 200