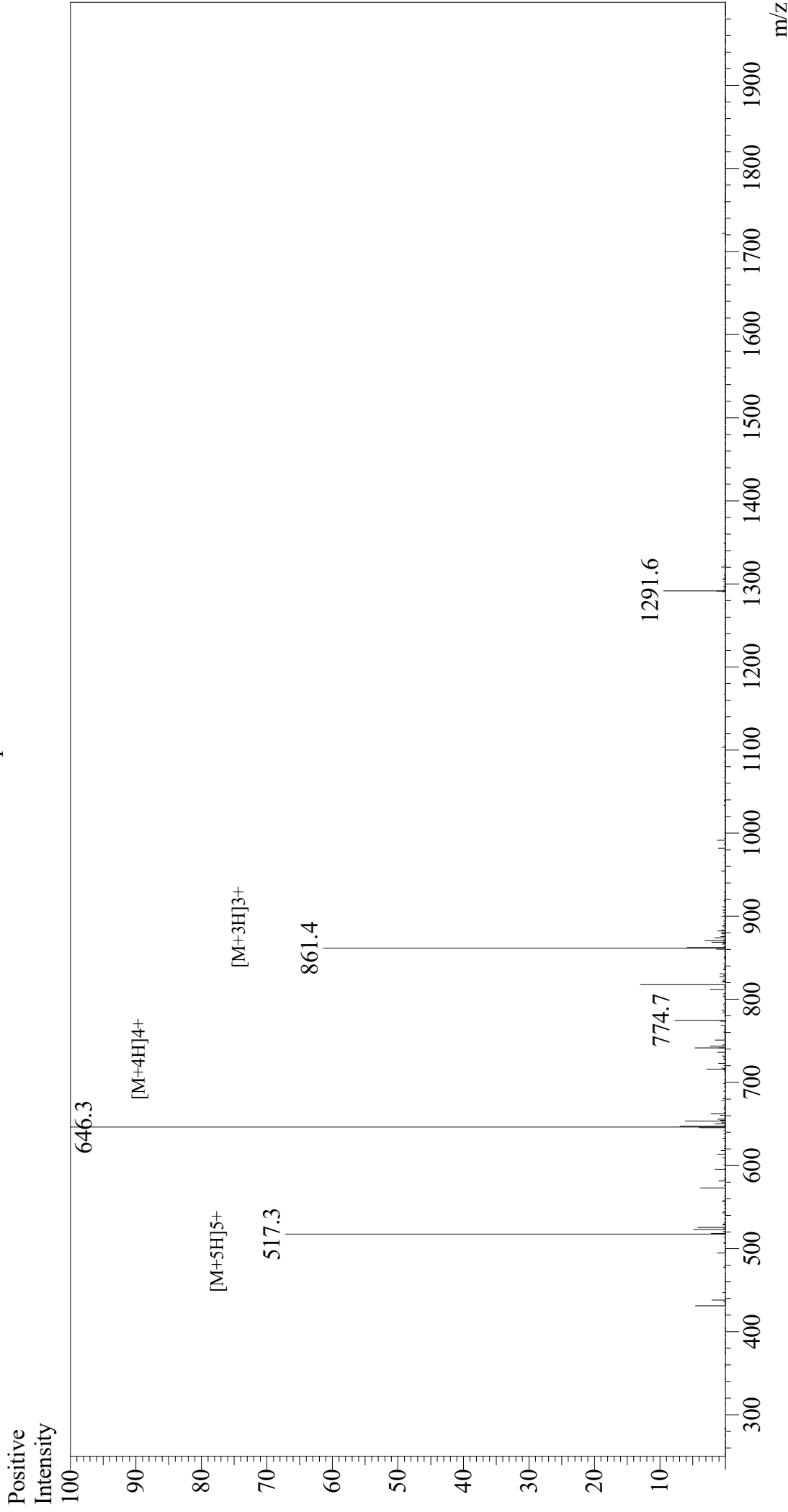


Mass Spectrum



Sample Information

Month-Day Processed : 11/14/20
Time Processed : 02:45:39 PM
Injection Volume : 0.6
Sample Name : MOG(35-55)
Cat No. : RP10245
Lot No. : E6038820K
Theoretical MW : 2581.98
Observed MW : 2581.2

Interface : ESI
Nebulizing Gas Flow : 1.5L/min
CDL Temp : 250
Block Temp : 200

Equipment : GK11010007
Interface Bias : +3.5 kV
Drying Gas Flow : 5 L/min
T.Flow : 0.2 ml/min
B.conc : 50%H2O/50%MeOH