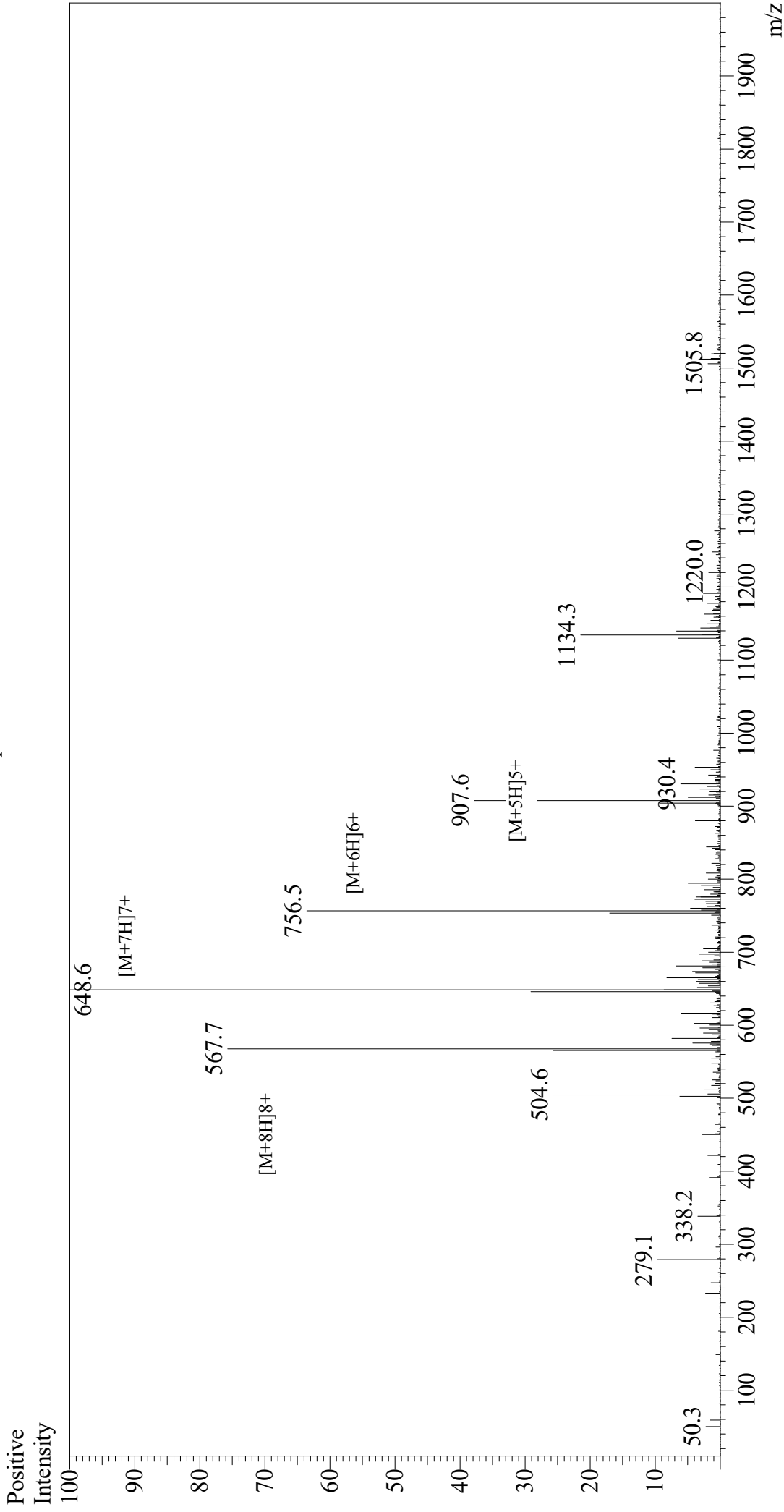


Mass Spectrum



Sample Information	Equipment	: GK11010007
Month-Day Processed :	Interface	: ESI
Time Processed :	Nebulizing Gas Flow	: 1.5L/min
Injection Volume :	CDL Temp	: 250
Sample Name :	Block Temp	: 200
Cat No. :	Drying Gas Flow	: 5 L/min
Lot No. :	T.Flow	: 0.2 ml/min
Theoretical MW :	B.conc	: 50% H ₂ O/50% MeOH
Observed MW :		

PACAP (1-38), human, ovine, rat
 RP10335
 E4728320K
 4534.26
 4533.2