

Sample Name : Glucagon-Like Peptide (GLP) II, human
 Cat. No. :RP10769
 Lot. No. :PE6751803

Pump A : 0.065% trifluoroacetic in 100% water (v/v)
 Pump B : 0.05% trifluoroacetic in 100% acetonitrile (v/v)
 Total Flow:1 ml/min
 Wavelength:220 nm

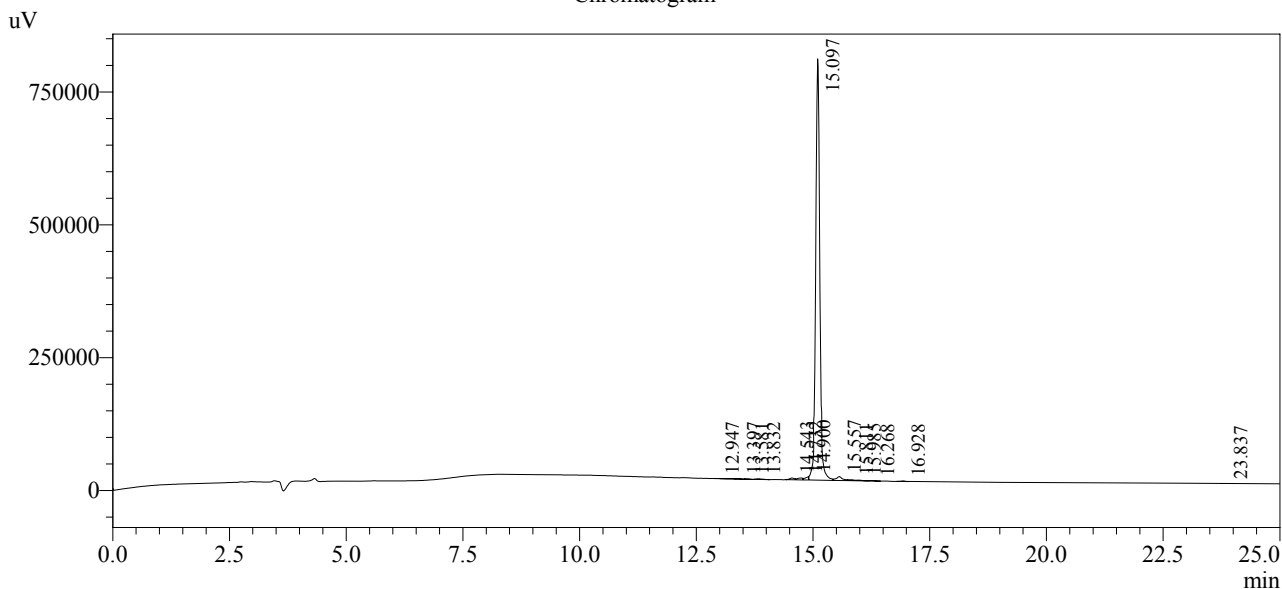
Time	Unit	Command	Value	Comment
0.01	Pumps	Pump A B.Conc	5	
25.00	Pumps	Pump A B.Conc	65	
25.01	Pumps	Pump A B.Conc	95	
27.00	Pumps	Pump A B.Conc	95	
27.01	Pumps	Pump A B.Conc	5	
35.00	Pumps	Pump A B.Conc	5	
35.01	Controller	Stop		

<<Column Performance>>

<Detector A>

Column : Alltima™ C18 4.6 x 250 mm

Chromatogram



1 Det. A Ch1 / 220nm

Peak Table

Detector A Ch1 220nm

Peak#	Ret. Time	Area	Height	Area %
1	12.947	3907	185	0.077
2	13.397	2033	416	0.040
3	13.581	1130	304	0.022
4	13.832	9001	1104	0.178
5	14.543	22666	3267	0.447
6	14.732	28302	3688	0.558
7	14.900	30993	6031	0.611
8	15.097	4866452	792781	95.997
9	15.557	66940	7156	1.320
10	15.811	14692	1773	0.290
11	15.985	9154	1074	0.181
12	16.268	5683	784	0.112
13	16.928	6950	1106	0.137
14	23.837	1469	220	0.029
Total		5069374	819888	100.000