

Sample Name :Glucagon-Like Peptide (GLP) II, human
 Cat. No. : RP10769
 Lot. No. : PE1081903
 Time Processed : 21:01:03
 Month-Day-Year Processed : 03/29/2019

Pump A : 0.065% trifluoroacetic in 100% water (v/v)
 Pump B : 0.05% trifluoroacetic in 100% acetonitrile (v/v)
 Total Flow: 1 ml/min
 Wavelength: 220 nm

| Time | Unit | Command | Value | Comment |
|-------|------------|--------------|-------|---------|
| 0.01 | Pumps | Pump B Conc. | 5 | |
| 25.00 | Pumps | Pump B Conc. | 65 | |
| 25.01 | Pumps | Pump B Conc. | 95 | |
| 27.00 | Pumps | Pump B Conc. | 95 | |
| 27.01 | Pumps | Pump B Conc. | 5 | |
| 35.00 | Pumps | Pump B Conc. | 5 | |
| 35.01 | Controller | Stop | | |

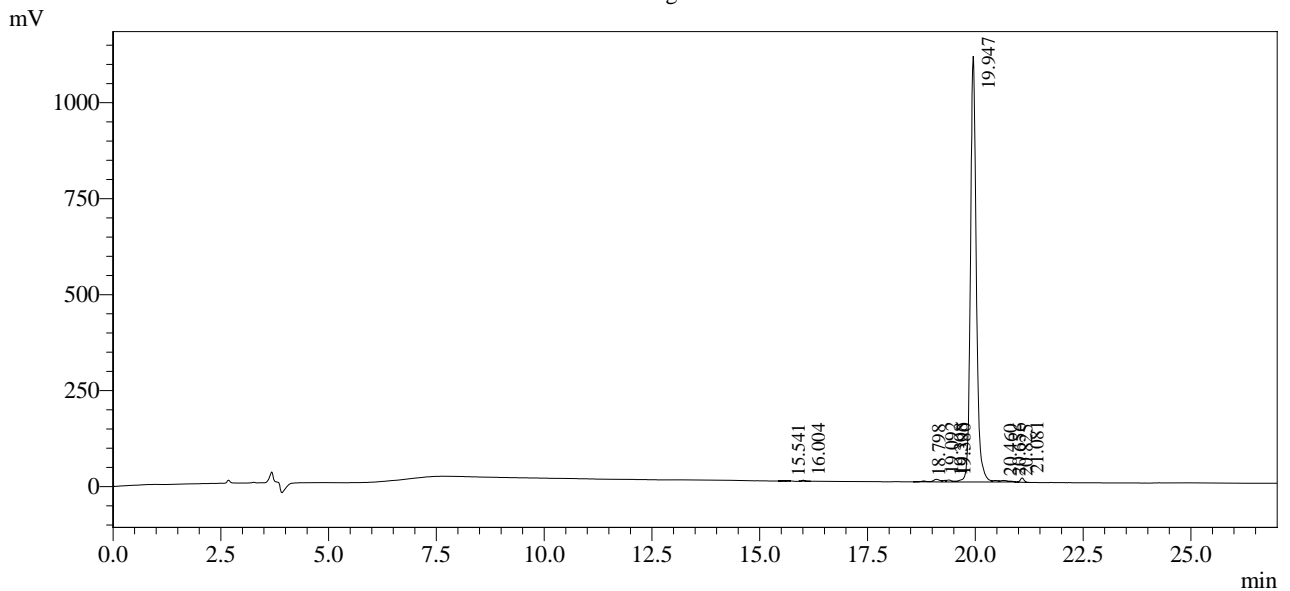
<<Column Performance>>

<Detector A>

Column : Inertsil ODS-3 4.6 x 250 mm

Equipment: SS-CM-0309

Chromatogram



1 Det.A Ch1 / 220nm

Peak Table

Detector A Ch1 220nm

| Peak# | Ret. Time | Area | Height | Area % |
|-------|-----------|----------|---------|---------|
| 1 | 15.541 | 2679 | 377 | 0.025 |
| 2 | 16.004 | 12231 | 2413 | 0.113 |
| 3 | 18.798 | 19175 | 2250 | 0.177 |
| 4 | 19.092 | 69059 | 6716 | 0.639 |
| 5 | 19.308 | 20045 | 3907 | 0.185 |
| 6 | 19.380 | 44729 | 5003 | 0.414 |
| 7 | 19.947 | 10487849 | 1108460 | 96.997 |
| 8 | 20.460 | 34083 | 3895 | 0.315 |
| 9 | 20.656 | 50169 | 3952 | 0.464 |
| 10 | 20.825 | 6815 | 1991 | 0.063 |
| 11 | 21.081 | 65746 | 11116 | 0.608 |
| Total | | 10812578 | 1150081 | 100.000 |