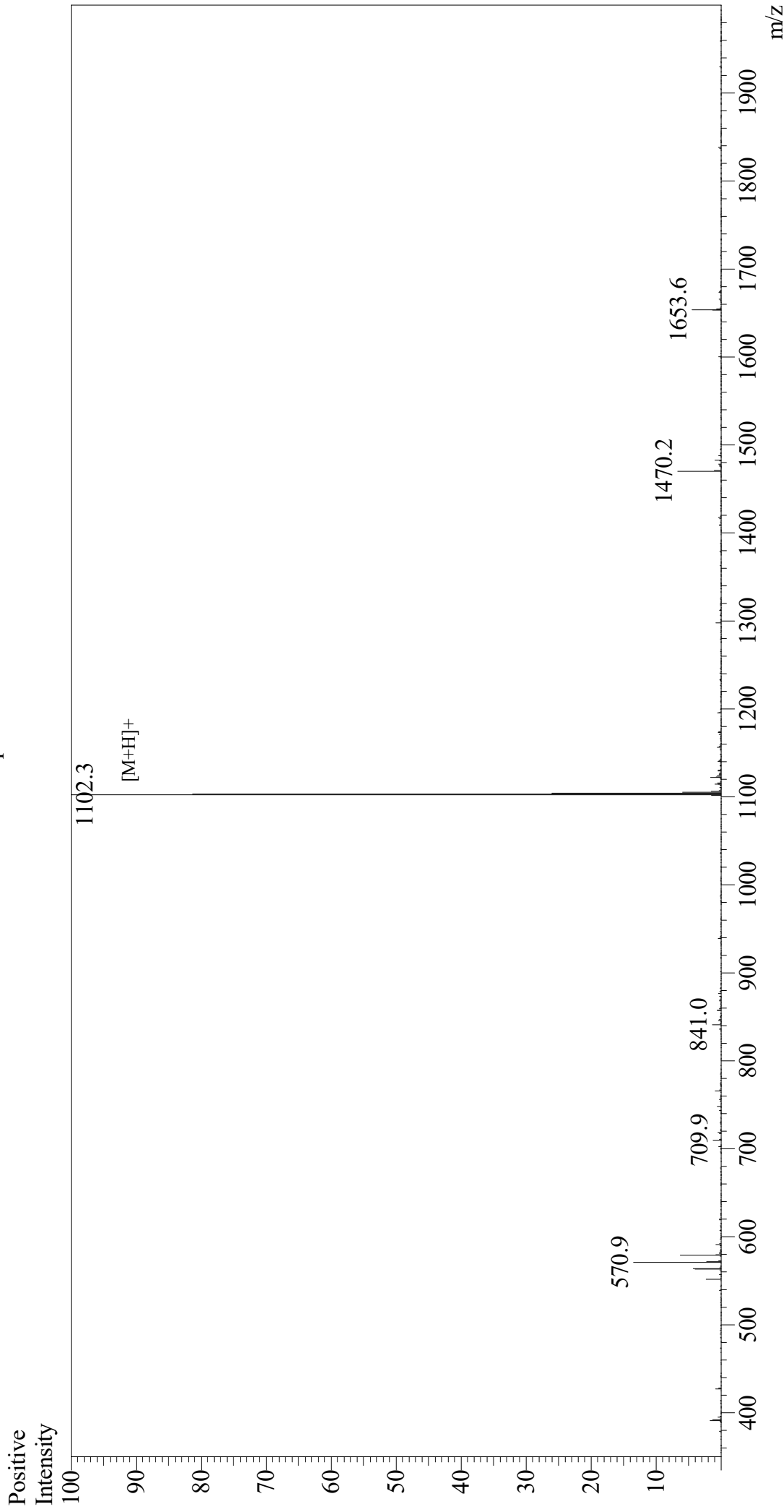


# Mass Spectrum



## Sample Information

Month-Day Processed : 05/03/21  
Time Processed : 14:27:30  
Injection Volume : 0.4  
Sample Name : HA Peptide  
Cat. No. : RP11735  
Lot. No. : E9394321D  
Theoretical MW : 1102.15  
Observed MW : 1101.3

## Interface

Interface : ESI  
Nebulizing Gas Flow : 1.5L/min  
CDL Temp : 250  
Block Temp : 200

## Equipment

Equipment : GK11010007  
Interface Bias : +4.5 kV  
Drying Gas Flow : 5 L/min  
T.Flow : 0.2 ml/min  
B.conc : 50% H<sub>2</sub>O/50% MeOH