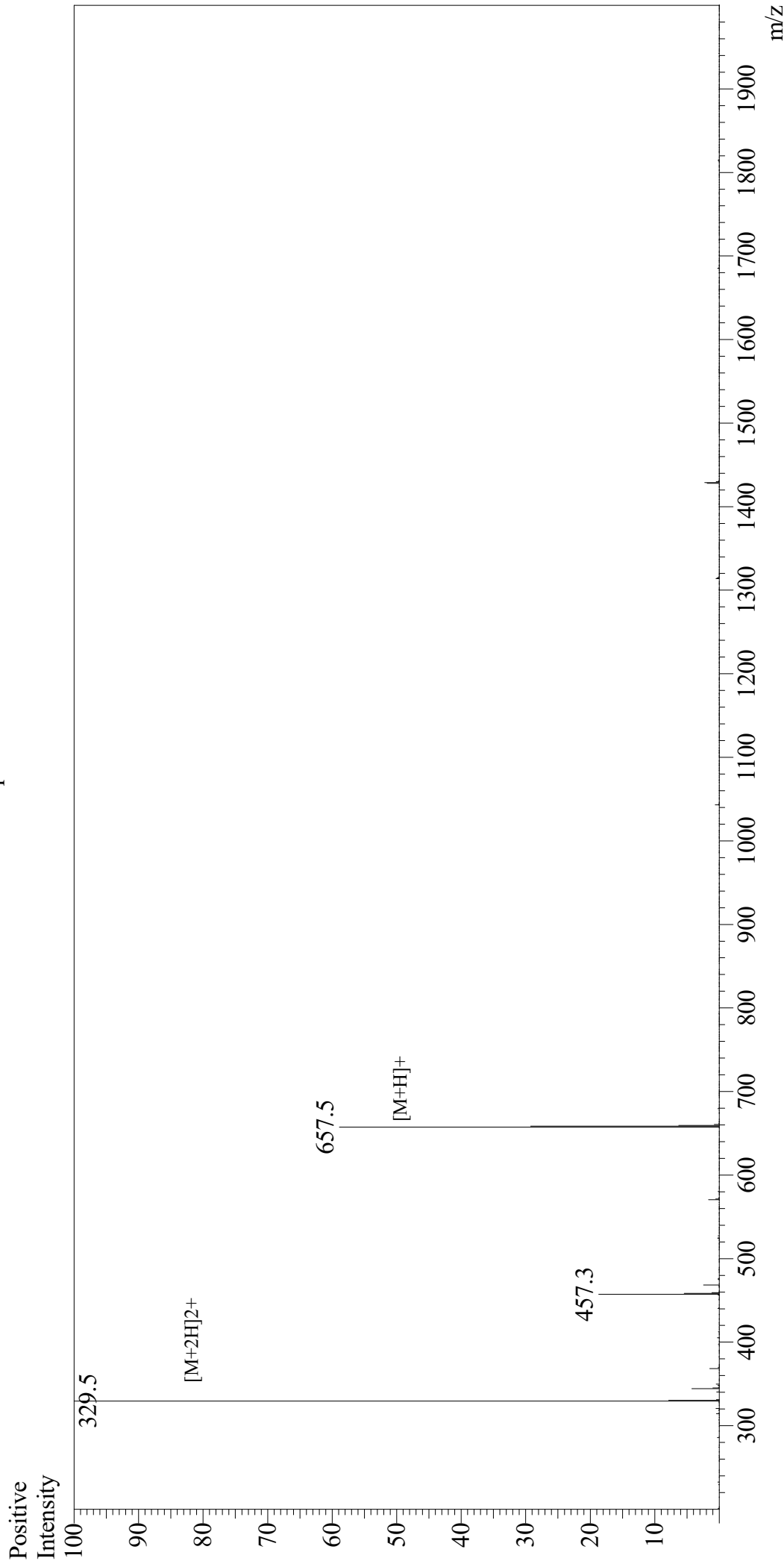


Mass Spectrum



Sample Information

User : Gary
Month-Day Processed : 05/10/19
Time Processed : 02:13:09 PM
Injection Volume : 0.3
Sample Name : PAR2 AP
Cat No. : RP19975
Lot No. : PE6171905
Theoretical MW : 656.83
Observed MW : 657.0

Interface : ESI
Nebulizing Gas Flow : 1.5L/min
CDL Temp : 250
Block Temp : 200

Equipment : GK11010007
Interface Bias : +4.5kV
Drying Gas Flow : 5 L/min
T.Flow : 0.2ml/min
B.conc : 50%H₂O/50%MeOH