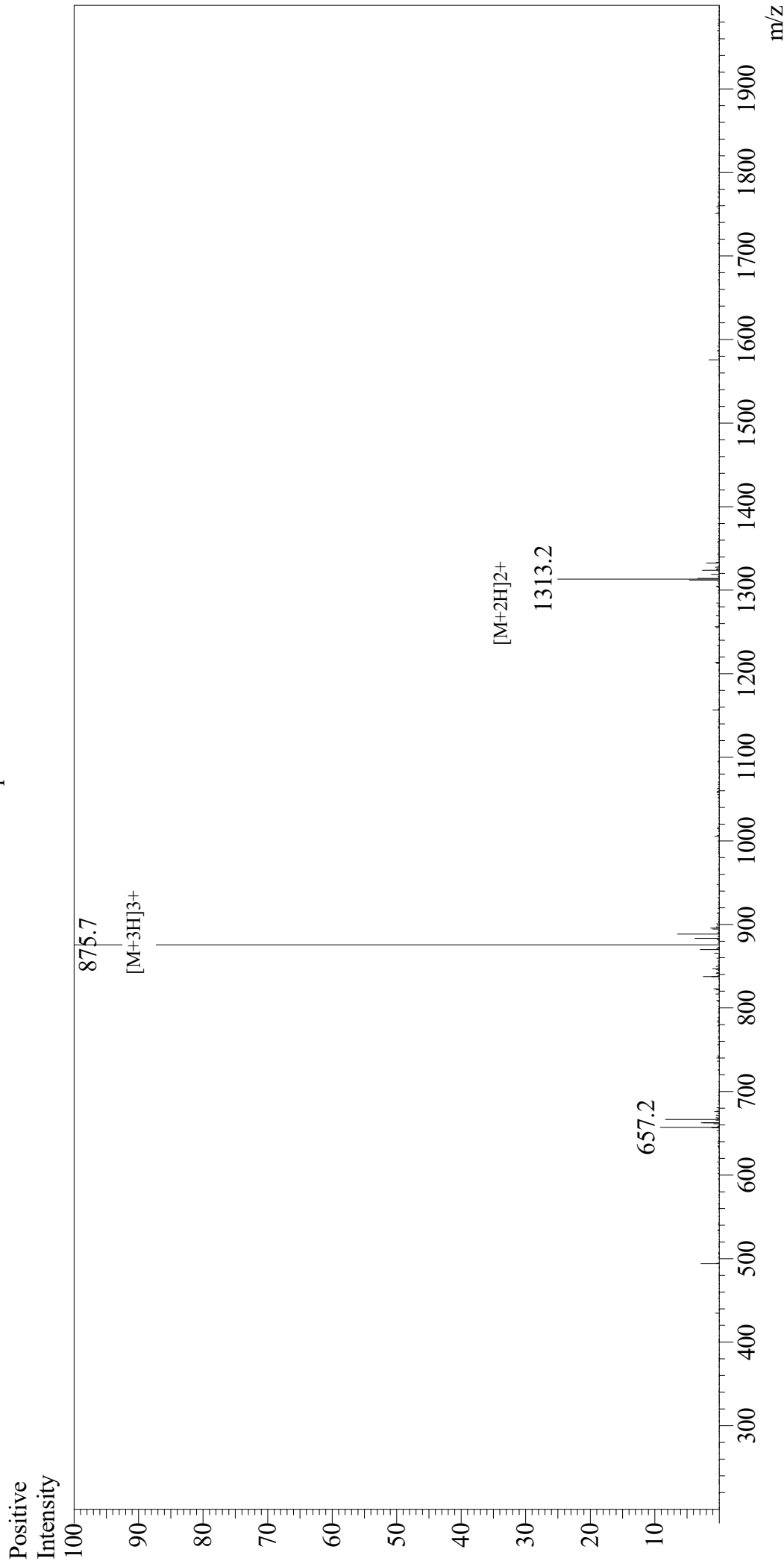


Mass Spectrum



Sample Information
User : Gary
Month-Day Processed : 10/02/19
Time Processed : 06:26:02 PM
Injection Volume : 0.3
Sample Name : M2e, human
Cat No. : RP20206
Lot No. : E7043819J
Theoretical MW : 2624.80
Observed MW : 2624.1

Interface : ESI
Nebulizing Gas Flow : 1.5L/min
CDL Temp : 250
Block Temp : 200

Equipment : GK11010007
Interface Bias : +4.5kV
Drying Gas Flow : 5 L/min
T.Flow : 0.2ml/min
B.conc : 50%H2O/50%MeOH