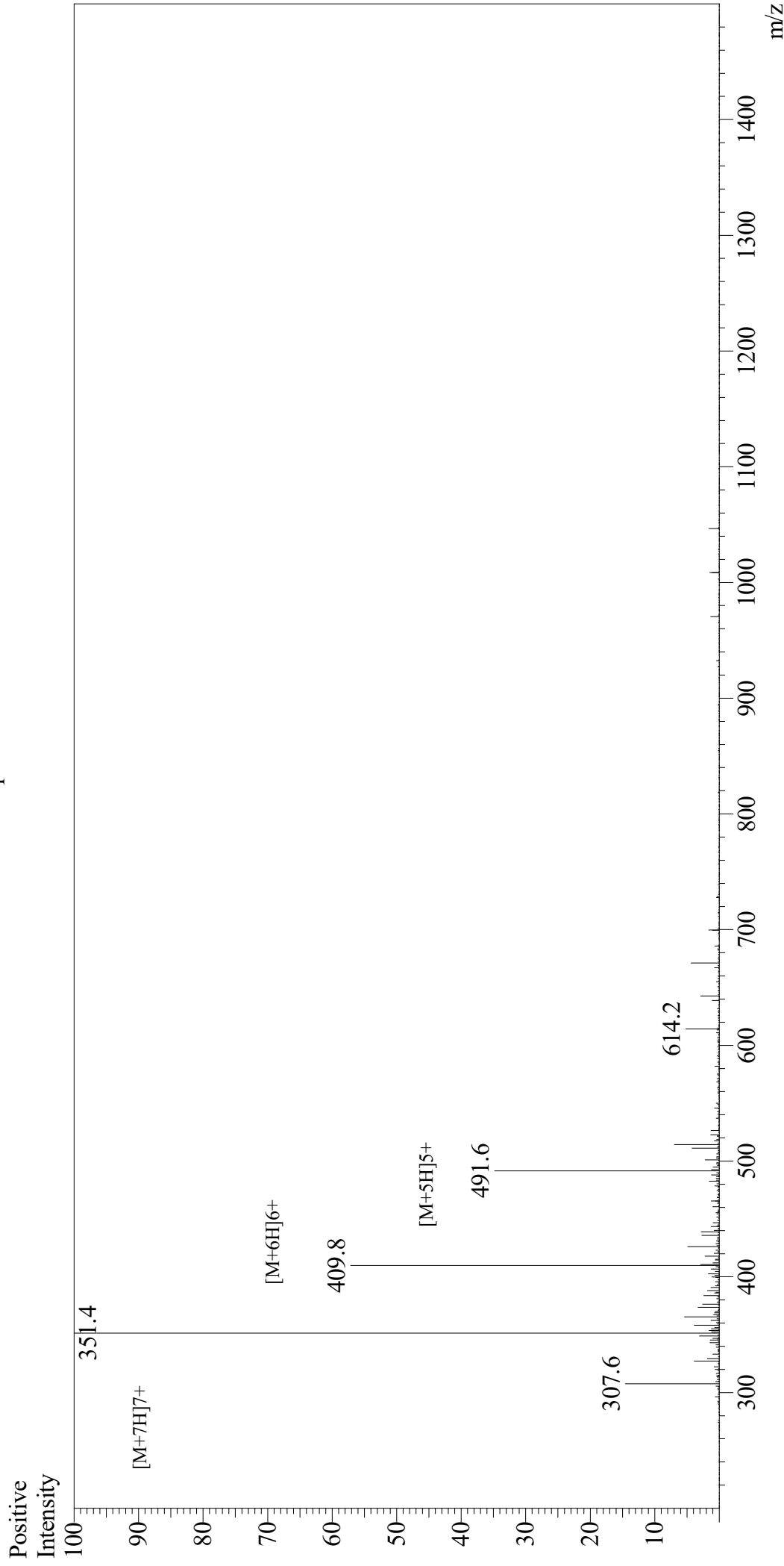


# Mass Spectrum



Sample Information  
User : Gary  
Month-Day Processed : 03/27/20  
Time Processed : 04:48:42 PM  
Injection Volume : 0.3  
Sample Name : sgp91 ds-tat Peptide 2, scrambled  
Cat No. : RP20436  
Lot No. : E6048820C  
Theoretical MW : 2453.00  
Observed MW : 2452.8

Interface : ESI  
Nebulizing Gas Flow : 1.5L/min  
CDL Temp : 250  
Block Temp : 200

Equipment : GK11010007  
Interface Bias : +4.5kV  
Drying Gas Flow : 5 L/min  
T.Flow : 0.2ml/min  
B.conc : 50%H2O/50%MeOH