

Sample Name: Galanin, human
 Cat No. : RP10801
 Lot No. : E0745920H
 Time Processed : 9:45:51
 Month-Day-Year Processed : 08/30/2020

Pump A : 0.065% trifluoroacetic in 100% water (v/v)
 Pump B : 0.05% trifluoroacetic in 100% acetonitrile (v/v)
 Total Flow: 1 ml/min
 Wavelength: 220 nm

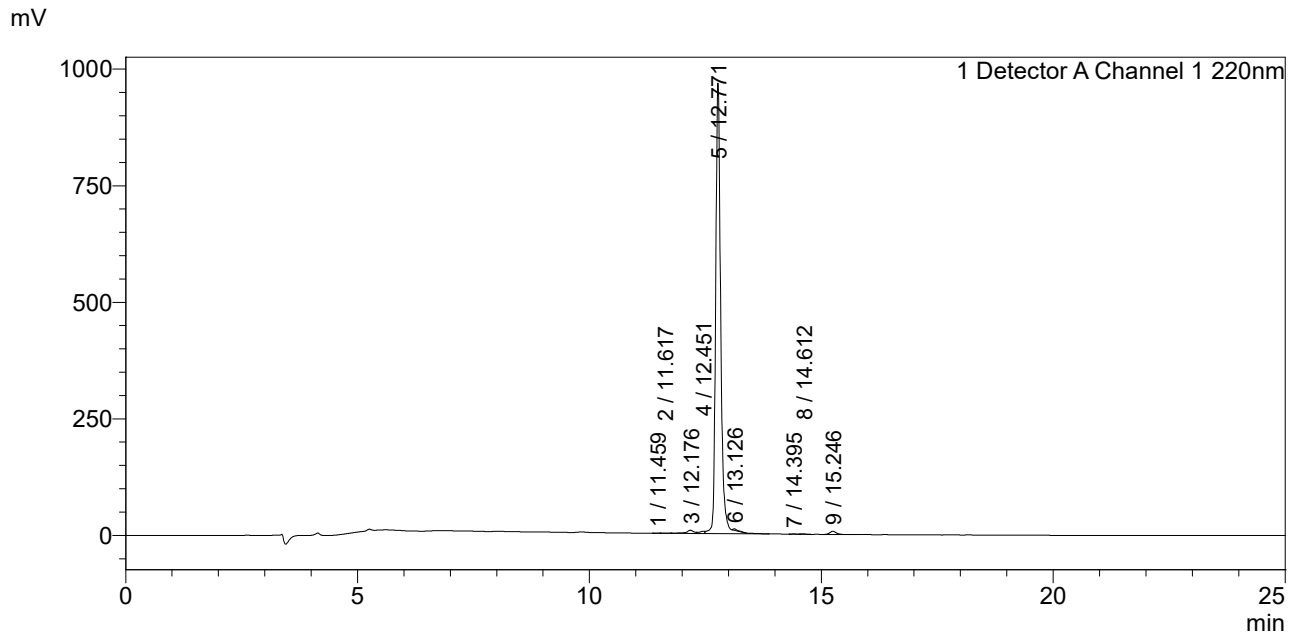
<<LC Time Program>>

Time	Module	Command	Value
0.01	Pumps	Solvent B Conc.	5
25.00	Pumps	Solvent B Conc.	65
25.01	Pumps	Solvent B Conc.	95
27.00	Pumps	Solvent B Conc.	95
27.01	Pumps	Solvent B Conc.	5
35.00	Pumps	Solvent B Conc.	5
35.01	Controller	Stop	

<<Column Performance>>

<Detector A>
 Column : Alltima™ C18 4.6 x 250 mm
 Equipment: ZJ19010141

<Chromatogram>



<Peak Table>

Detector A Channel 1 220nm

Peak#	Ret. Time	Area	Height	Area%
1	11.459	2107	327	0.028
2	11.617	4713	362	0.062
3	12.176	82766	7093	1.093
4	12.451	39332	4739	0.520
5	12.771	7348361	966644	97.065
6	13.126	20806	3422	0.275
7	14.395	2034	250	0.027
8	14.612	3844	608	0.051
9	15.246	66603	7015	0.880
Total		7570565	990460	100.000