

Sample Name : PLP(139-151)
 Cat. No. : RP10550
 Lot. No. : PE8481701

Pump A : 0.065% trifluoroacetic in 100% water (v/v)
 Pump B : 0.05% trifluoroacetic in 100% acetonitrile (v/v)
 Total Flow:1 ml/min
 Wavelength:220 nm

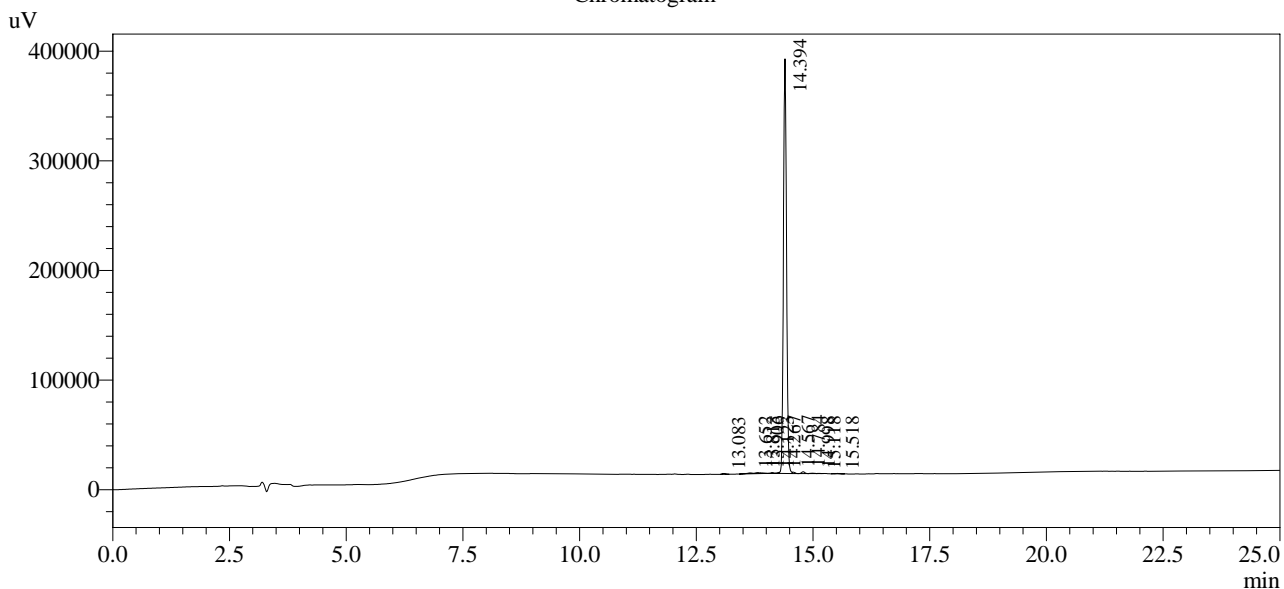
| Time | Unit | Command | Value | Comment |
|-------|------------|--------------|-------|---------|
| 0.01 | Pumps | Pump B Conc. | 5 | |
| 25.00 | Pumps | Pump B Conc. | 65 | |
| 25.01 | Pumps | Pump B Conc. | 95 | |
| 31.00 | Pumps | Pump B Conc. | 95 | |
| 31.01 | Pumps | Pump B Conc. | 5 | |
| 40.00 | Pumps | Pump B Conc. | 5 | |
| 40.01 | Controller | Stop | | |

<<Column Performance>>

<Detector A>

Column : Alltima™ C18 4.6 x 250 mm

Chromatogram



1 Det.A Ch1 / 220nm

Peak Table

Detector A Ch1 220nm

| Peak# | Ret. Time | Area | Height | Area % |
|-------|-----------|---------|--------|---------|
| 1 | 13.083 | 3559 | 718 | 0.197 |
| 2 | 13.652 | 6539 | 793 | 0.363 |
| 3 | 13.813 | 6176 | 928 | 0.343 |
| 4 | 13.906 | 2924 | 490 | 0.162 |
| 5 | 14.123 | 3017 | 692 | 0.167 |
| 6 | 14.267 | 3132 | 948 | 0.174 |
| 7 | 14.394 | 1759316 | 378211 | 97.570 |
| 8 | 14.567 | 4361 | 1257 | 0.242 |
| 9 | 14.784 | 8184 | 1666 | 0.454 |
| 10 | 14.998 | 2785 | 390 | 0.154 |
| 11 | 15.118 | 961 | 213 | 0.053 |
| 12 | 15.518 | 2185 | 334 | 0.121 |
| Total | | 1803139 | 386639 | 100.000 |