

Sample Name: Gly-Arg-Gly-Asp-Ser
 Cat No. :RP10848
 Lot No. :E6864920H
 Time Processed: 8:46:50 AM
 Month-Day-Year Processed :08/06/2020

Pump A : 0.065% trifluoroacetic in 100% water (v/v)
 Pump B : 0.05% trifluoroacetic in 100% acetonitrile (v/v)
 Total Flow: 1 ml/min
 Wavelength: 220 nm

<<LC Time Program>>

Time	Module	Command	Value
0.01	Pumps	Solvent B Conc.	0
5.00	Pumps	Solvent B Conc.	0
20.00	Pumps	Solvent B Conc.	30
25.00	Pumps	Solvent B Conc.	65
25.01	Pumps	Solvent B Conc.	95
27.00	Pumps	Solvent B Conc.	95
27.01	Pumps	Solvent B Conc.	0
33.00	Pumps	Solvent B Conc.	0
33.01	Controller	Stop	

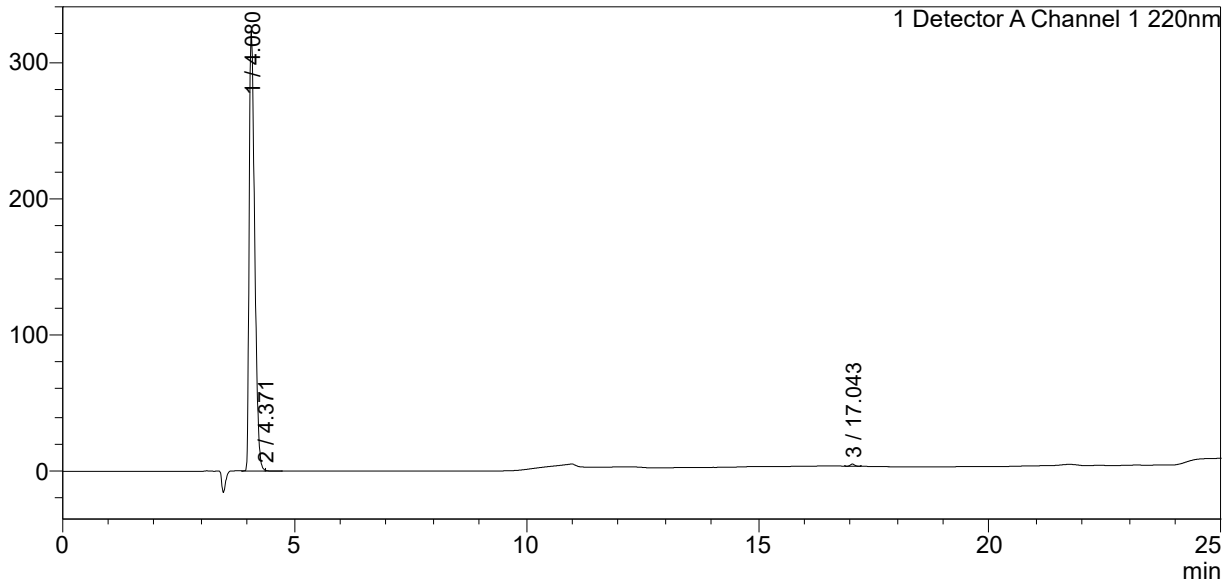
<<Column Performance>>

<Detector A>

Column : AlltimaTM C18 4.6 x 250 mm
 Equipment: ZJ19010325

<Chromatogram>

mV



<Peak Table>

Detector A Channel 1 220nm

Peak#	Ret. Time	Area	Height	Area%
1	4.080	2638256	321939	99.493
2	4.371	3399	855	0.128
3	17.043	10038	1604	0.379
Total		2651693	324397	100.000