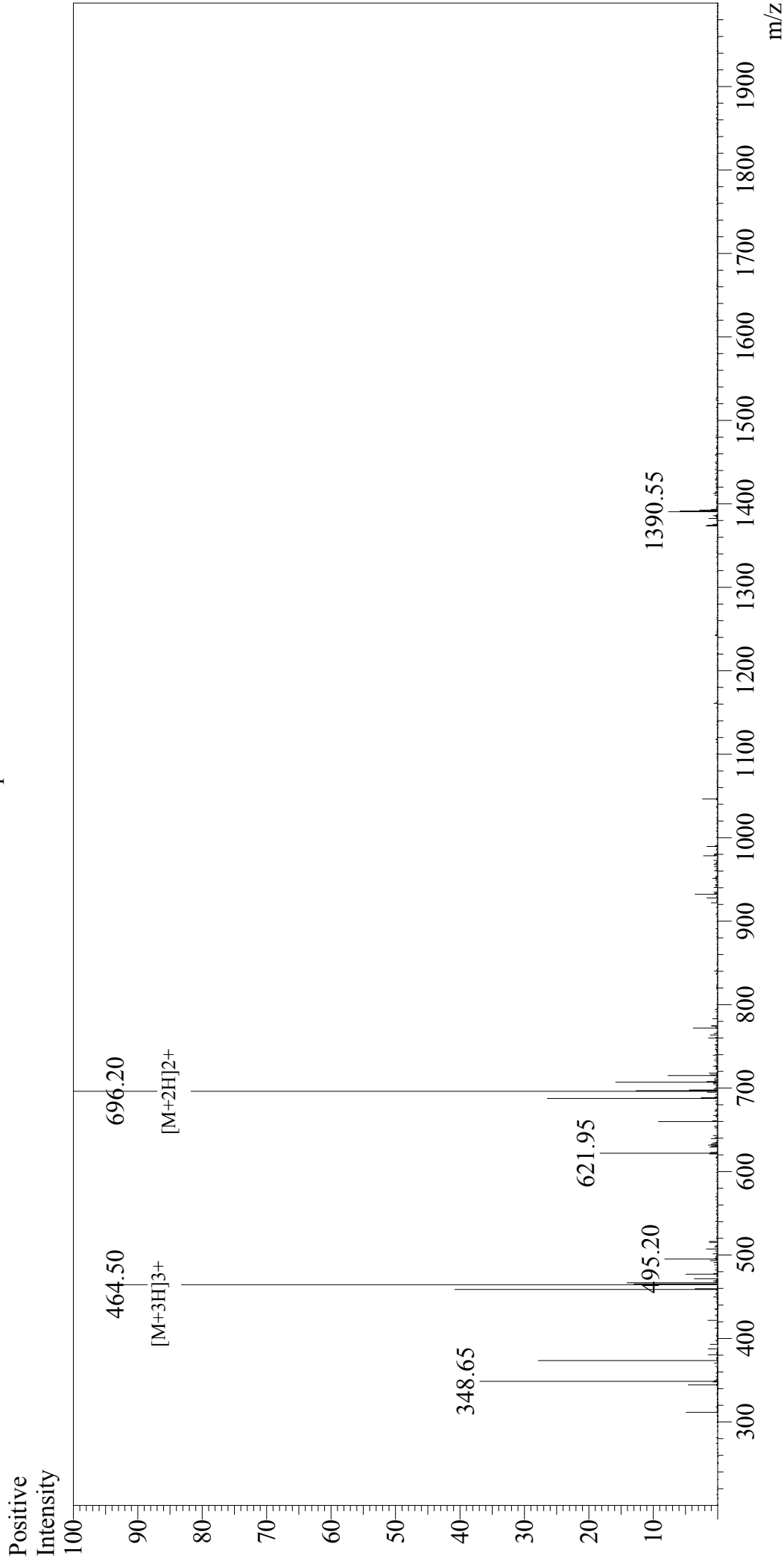


Mass Spectrum



Sample Information

User : Gary
Month-Day Processed : 05/06/17
Time Processed : 16:56:12
Injection Volume : 0.2
Sample Name : Myelin Basic Protein (MBP) (synthetic)
Cat No. : RP10314
Lot No. : PE8541705
Theoretical MW : 1390.50
Observed MW : 1390.40

Interface

Interface : ESI
Nebulizing Gas Flow : 1.5L/min
CDL Temp : 250°C
Block Temp : 200°C

Interface Bias

Interface Bias : +4.5kV
Drying Gas Flow : 5 L/min
T.Flow : 0.2ml/min
B.conc : 50%H₂O/50%MeOH