

Sample Name :CEF14, EBV Rta Protein (28-37)  
Cat No. :RP20442  
Lot No. :E4962919I  
Time Processed :14:26:20  
Month-Day-Year Processed :09/20/2019

Pump A : 0.065% trifluoroacetic in 100% water (v/v)  
Pump B : 0.05% trifluoroacetic in 100% acetonitrile (v/v)  
Total Flow:1 ml/min  
Wavelength:220 nm

<<LC Time Program>>

| Time  | Module     | Command         | Value |
|-------|------------|-----------------|-------|
| 0.01  | Pumps      | Solvent B Conc. | 5     |
| 25.00 | Pumps      | Solvent B Conc. | 65    |
| 25.01 | Pumps      | Solvent B Conc. | 95    |
| 31.00 | Pumps      | Solvent B Conc. | 95    |
| 31.01 | Pumps      | Solvent B Conc. | 5     |
| 40.00 | Pumps      | Solvent B Conc. | 5     |
| 40.01 | Controller | Stop            |       |

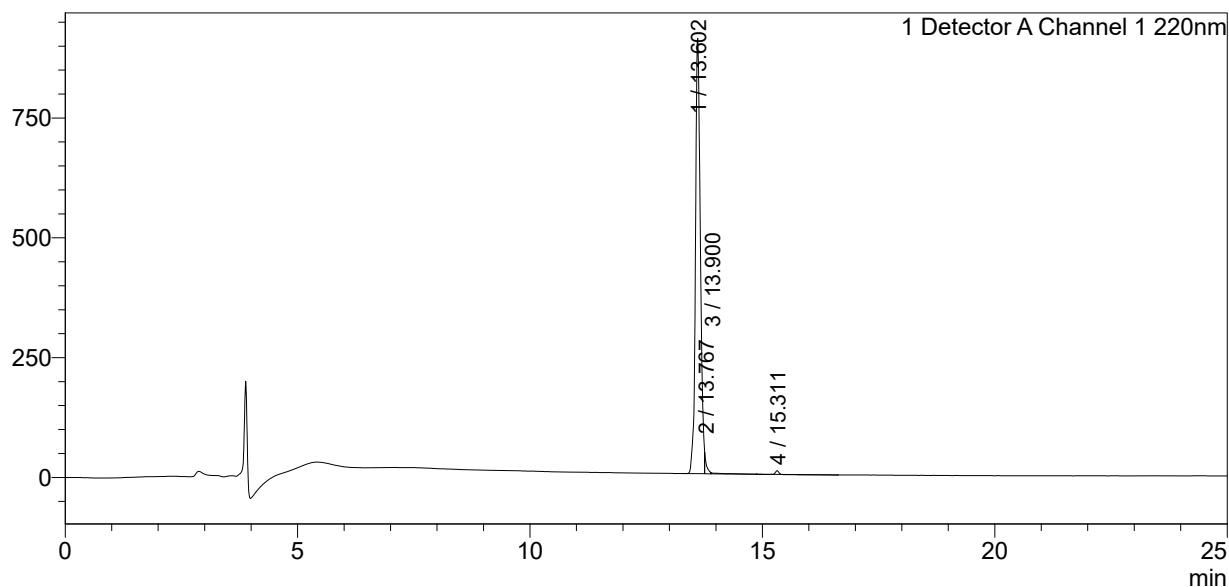
<<Column Performance>>

<Detector A>

Column : Inertsil ODS-3 4.6 x 250 mm  
Equipment:ZJ17010507

### <Chromatogram>

mV



### <Peak Table>

Detector A Channel 1 220nm

| Peak# | Ret. Time | Area    | Height | Area%   |
|-------|-----------|---------|--------|---------|
| 1     | 13.602    | 6676037 | 907951 | 97.723  |
| 2     | 13.767    | 103556  | 35975  | 1.516   |
| 3     | 13.900    | 33085   | 2330   | 0.484   |
| 4     | 15.311    | 18889   | 7753   | 0.276   |
| Total |           | 6831567 | 954009 | 100.000 |