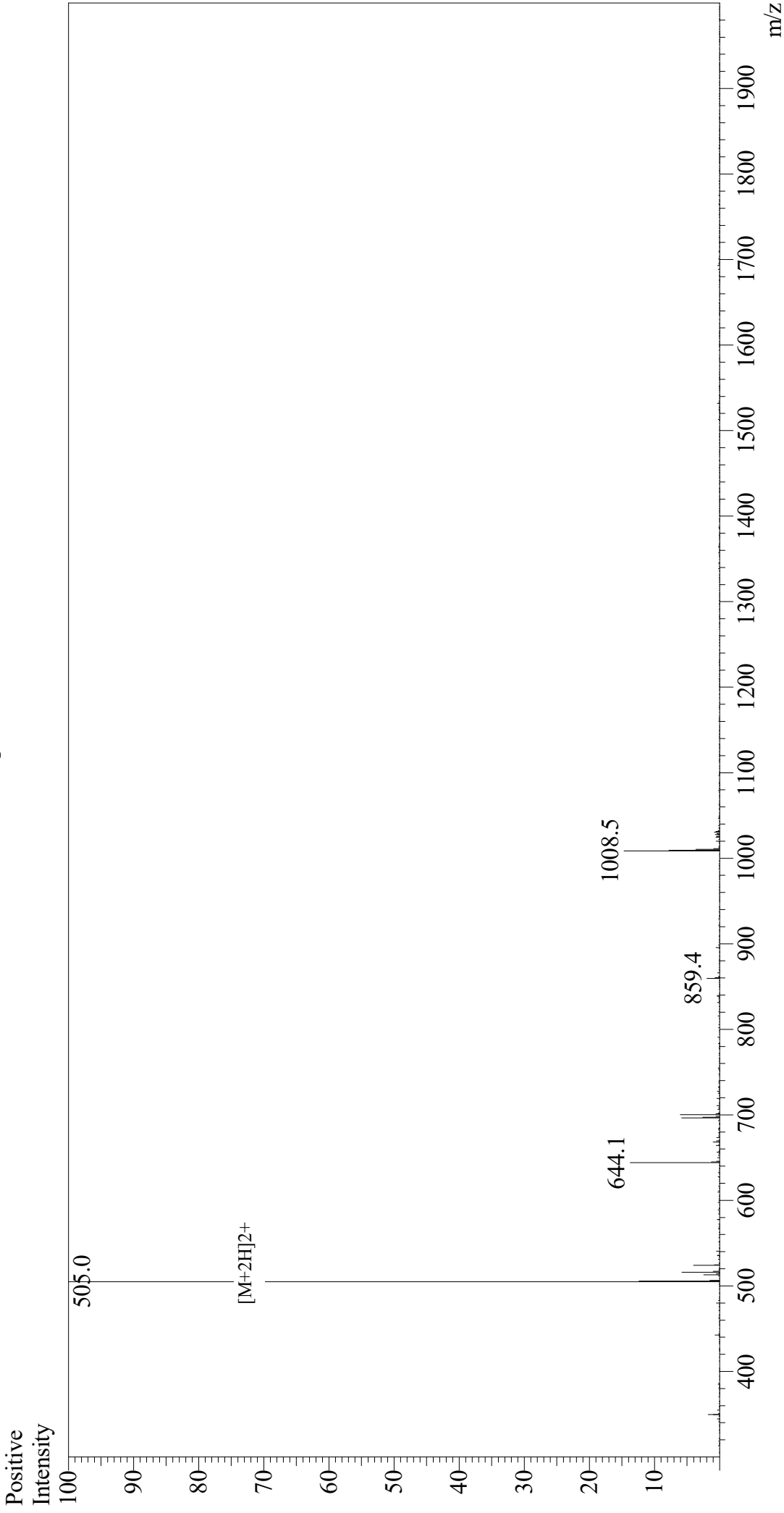


Mass Spectrum



Sample Information

Acquired by: Gary
Month-Day Processed: 09/25/19
Time Processed: 08:51:19 PM
Injection Volume: 0.3
Sample Name: NP(118-126)
Cat. No.: RP20351
Lot. No.: E49600191
Theoretical MW: 1008.16
Observed MW: 1008.0

Interface: ESI
Nebulizing Gas Flow: 1.5L/min
CDL Temp: 250
Block Temp: 200

Equipment: GK11010007
Interface Bias: +4.5 kV
Drying Gas Flow: 5 L/min
T.Flow: 0.2 ml/min
B.conc: 50%H2O/50%MeOH