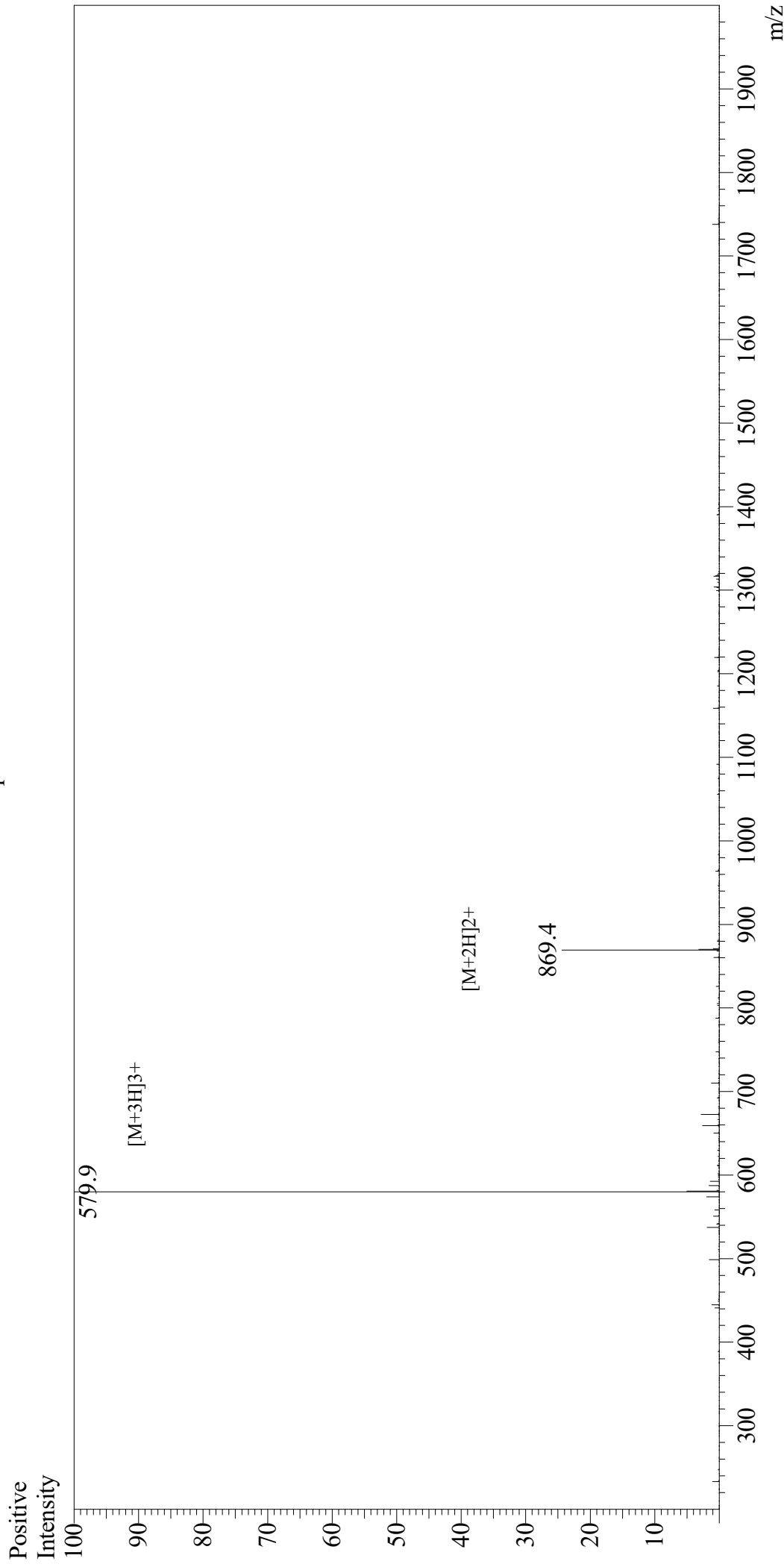


Mass Spectrum



Sample Information

User : Gary
Month-Day Processed : 06/29/19
Time Processed : 11:07:49 AM
Injection Volume : 0.3
Sample Name : Myelin Basic Protein (MBP) (68-82), guinea pig
Cat No. : RP10605
Lot No. : E5717019F
Theoretical MW : 1736.80
Observed MW : 1736.7

Interface : ESI
Nebulizing Gas Flow : 1.5L/min
CDL Temp : 250
Block Temp : 200

Equipment : GK11010007
Interface Bias : +4.5kV
Drying Gas Flow : 5 L/min
T.Flow : 0.2ml/min
B.conc : 50%H2O/50%MeOH