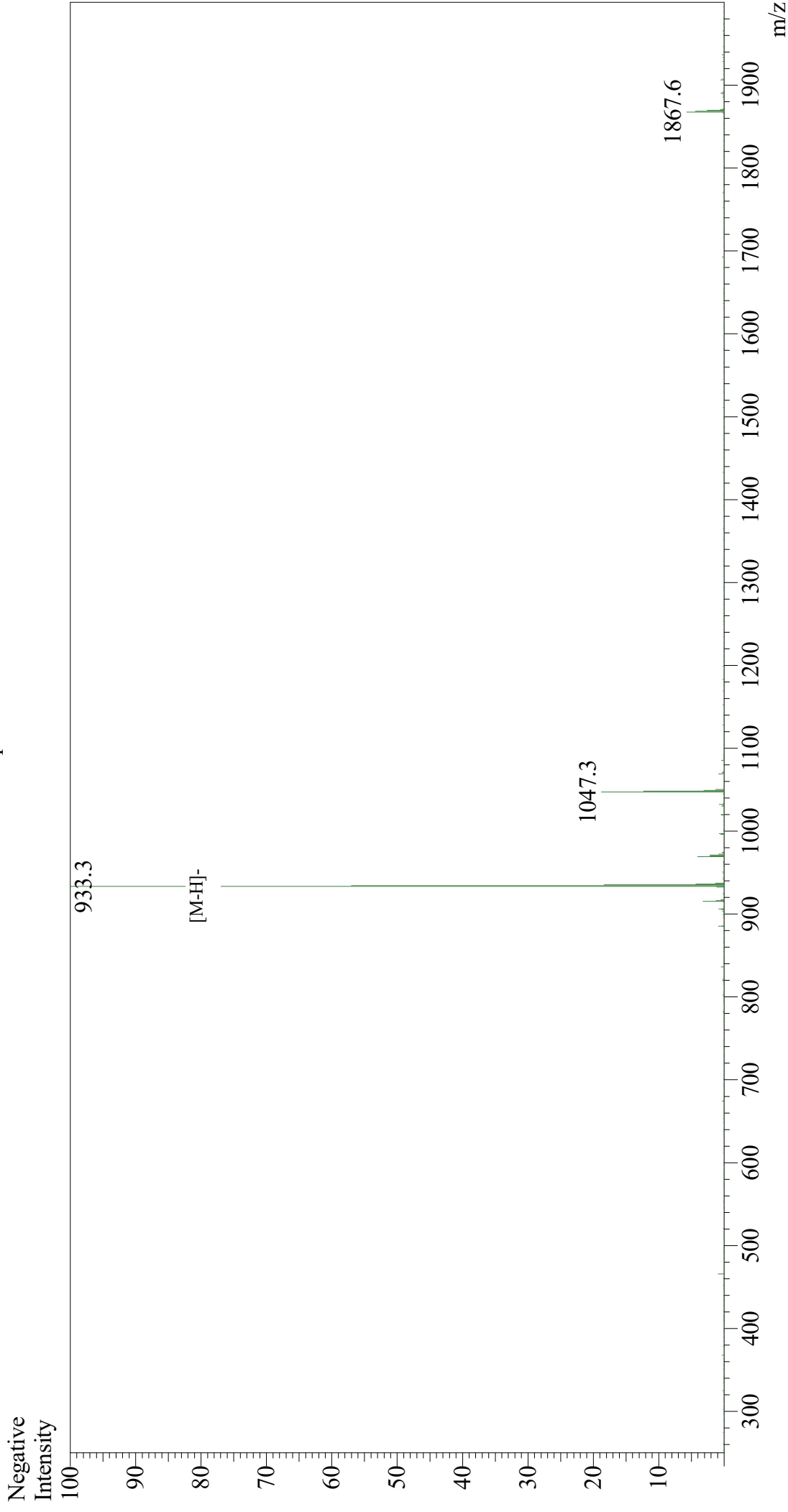


# Mass Spectrum



## Sample Information

User : Gary  
Month-Day Processed : 03/08/19  
Time Processed : 11:39:43 AM  
Injection Volume : 0.2  
Sample Name : p2Ca  
Cat No. : RP19988  
Lot No. : PE8631902  
Theoretical MW : 935.10  
Observed MW : 934.3

Interface : ESI  
Nebulizing Gas Flow : 1.5L/min  
CDL Temp : 250  
Block Temp : 200

Equipment : GK11010007  
Interface Bias : -3.5 kV  
Drying Gas Flow : 5 L/min  
T.Flow : 0.2 ml/min  
B.conc : 50%H2O/50%MeOH