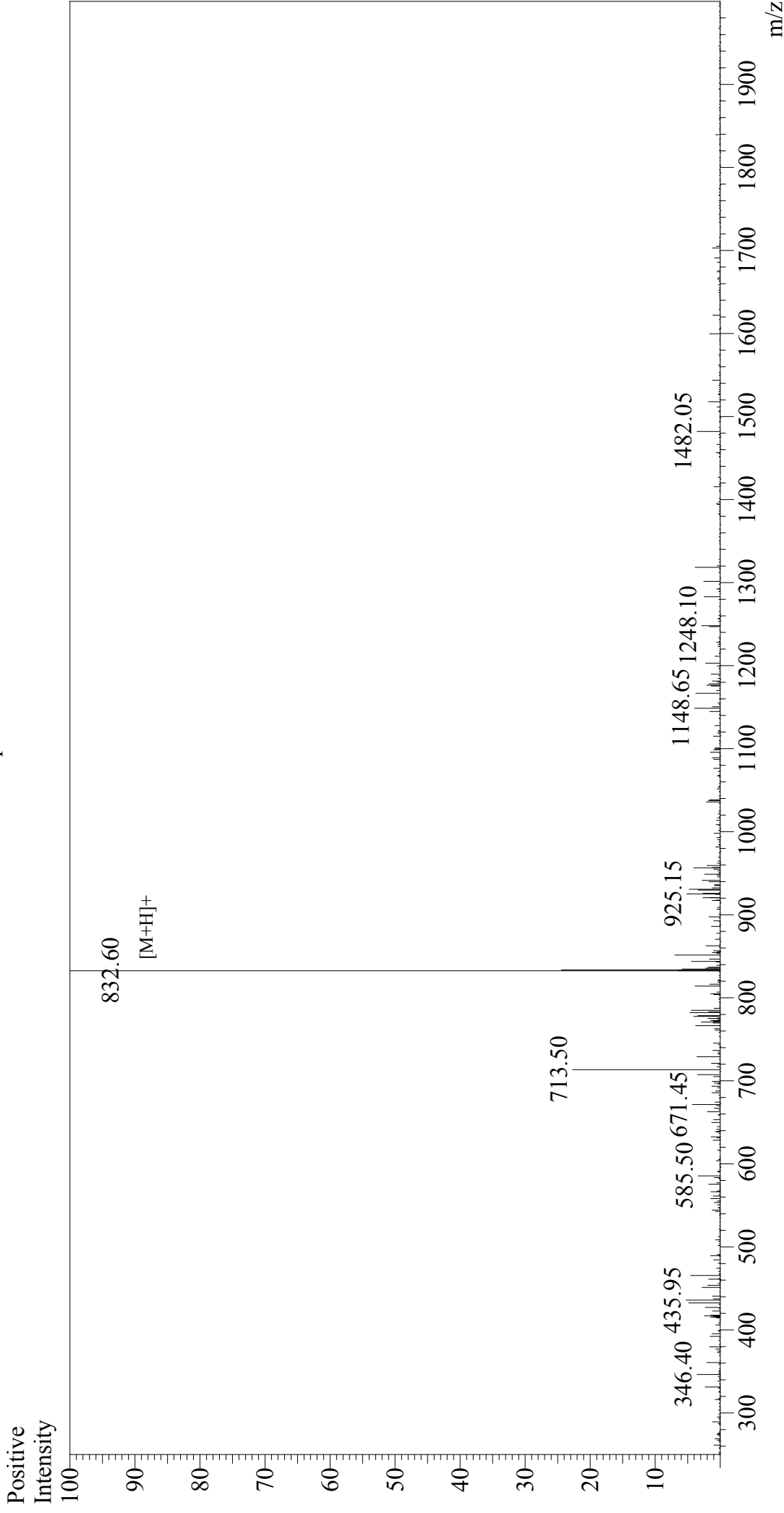


Mass Spectrum



Sample Information

Acquired by :	Gary	Interface	:ESI	Interface Bias	: +4.5 kV
Month-Day Processed :	11/07/17	Nebulizing Gas Flow	:1.5L/min	Drying Gas Flow	:5 L/min
Time Processed :	17:40:57	CDL Temp	:250°C	T.Flow	:0.2 ml/min
Injection Volume :	0.2	Block Temp	:200°C	B.conc	:50%H2O/50%MeOH
Sample Name :	Abz-FR-K (Dnp)-P-OH				
Cat No. :	RP20115				
Lot No. :	PE7181710				
Theoretical MW :	831.89				
Observed MW :	831.60				