

Sample Name: PAR2 AP  
 Cat No. : RP19975  
 Lot No. : E8092421C  
 Time Processed: 15:59:37  
 Year-Month-Day: 2021/3/10

Pump A : 0.065% trifluoroacetic in 100% water (v/v)  
 Pump B : 0.05% trifluoroacetic in 100% acetonitrile (v/v)  
 Total Flow: 1 ml/min

<<Detector A>>  
 Wavelength Ch1 : 220 nm

<<LC Time Program>>

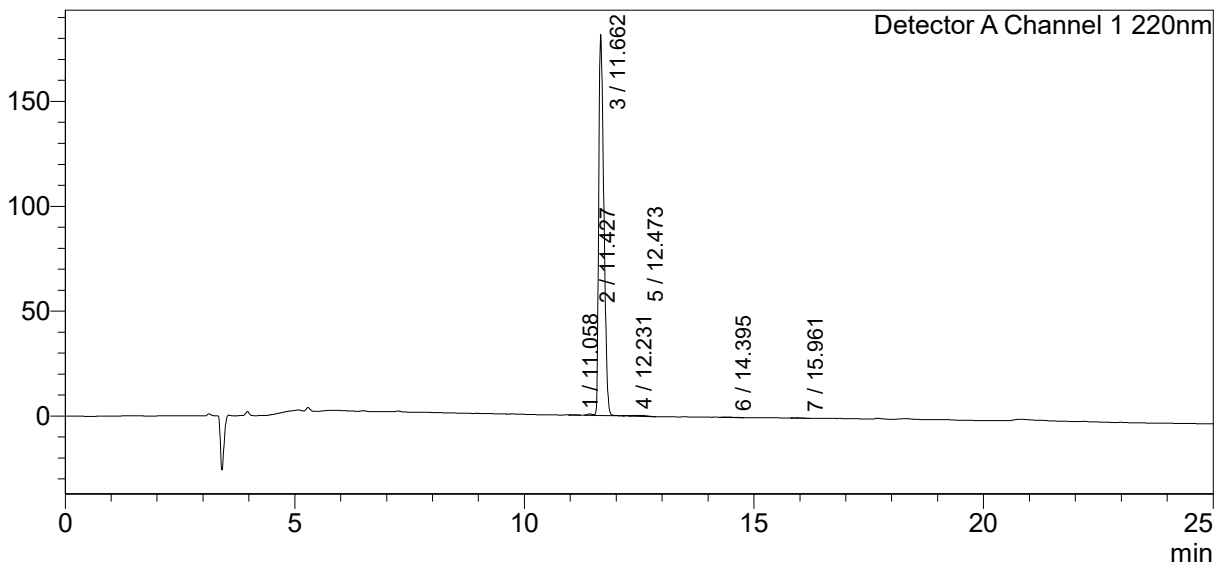
| Time  | Module     | Command         | Value | Comment |
|-------|------------|-----------------|-------|---------|
| 0.01  | Pumps      | Solvent B Conc. | 5     |         |
| 25.00 | Pumps      | Solvent B Conc. | 65    |         |
| 25.01 | Pumps      | Solvent B Conc. | 95    |         |
| 27.00 | Pumps      | Solvent B Conc. | 95    |         |
| 27.01 | Pumps      | Solvent B Conc. | 5     |         |
| 33.00 | Pumps      | Solvent B Conc. | 5     |         |
| 33.01 | Controller | Stop            |       |         |

<<Column Performance>>

<Detector A>  
 Column : Inertsil ODS-3 4.6 x 250 mm  
 Equipment: ZJ19010015

<Chromatogram>

mV



<Peak Table>

Detector A Channel 1 220nm

| Peak# | Ret. Time | Area    | Height | Area%   |
|-------|-----------|---------|--------|---------|
| 1     | 11.058    | 1432    | 155    | 0.100   |
| 2     | 11.427    | 4701    | 686    | 0.328   |
| 3     | 11.662    | 1411756 | 181585 | 98.614  |
| 4     | 12.231    | 1263    | 183    | 0.088   |
| 5     | 12.473    | 8250    | 408    | 0.576   |
| 6     | 14.395    | 2394    | 143    | 0.167   |
| 7     | 15.961    | 1802    | 153    | 0.126   |
| Total |           | 1431597 | 183313 | 100.000 |