

Sample Name: Orexin B, human
 Cat No. : RP10415
 Lot No. : E1705619J
 Time Processed: 4:41:42 PM
 Month-Day-Year Processed :10/31/2019

Pump A : 0.065% trifluoroacetic in 100% water (v/v)
 Pump B : 0.05% trifluoroacetic in 100% acetonitrile (v/v)
 Total Flow: 1 ml/min
 Wavelength: 220 nm

<<LC Time Program>>

Time	Module	Command	Value
0.01	Pumps	Solvent B Conc.	5
25.00	Pumps	Solvent B Conc.	65
25.01	Pumps	Solvent B Conc.	95
27.00	Pumps	Solvent B Conc.	95
27.01	Pumps	Solvent B Conc.	5
33.00	Pumps	Solvent B Conc.	5
33.00	Controller	Stop	

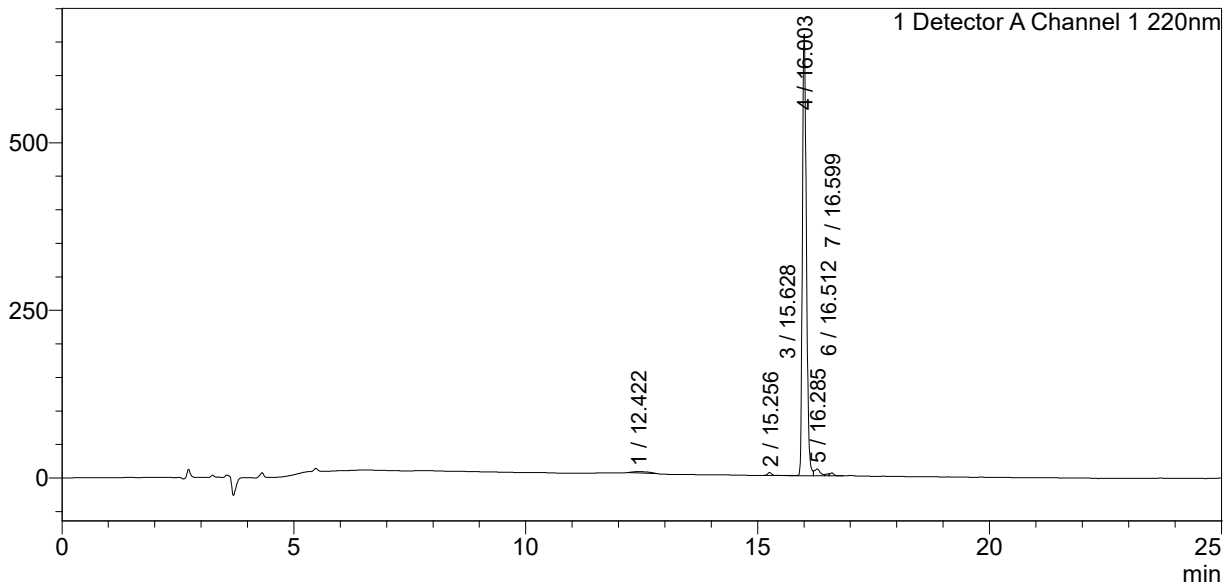
<<Column Performance>>

<Detector A>

Column : Alltima™ C18 4.6 x 250 mm
 Equipment: ZJ19010325

<Chromatogram>

mV



<Peak Table>

Detector A Channel 1 220nm

Peak#	Ret. Time	Area	Height	Area%
1	12.422	44072	1753	1.051
2	15.256	24598	4386	0.586
3	15.628	2719	224	0.065
4	16.003	3994733	658353	95.226
5	16.285	88331	10242	2.106
6	16.512	15102	2889	0.360
7	16.599	25435	4325	0.606
Total		4194991	682172	100.000