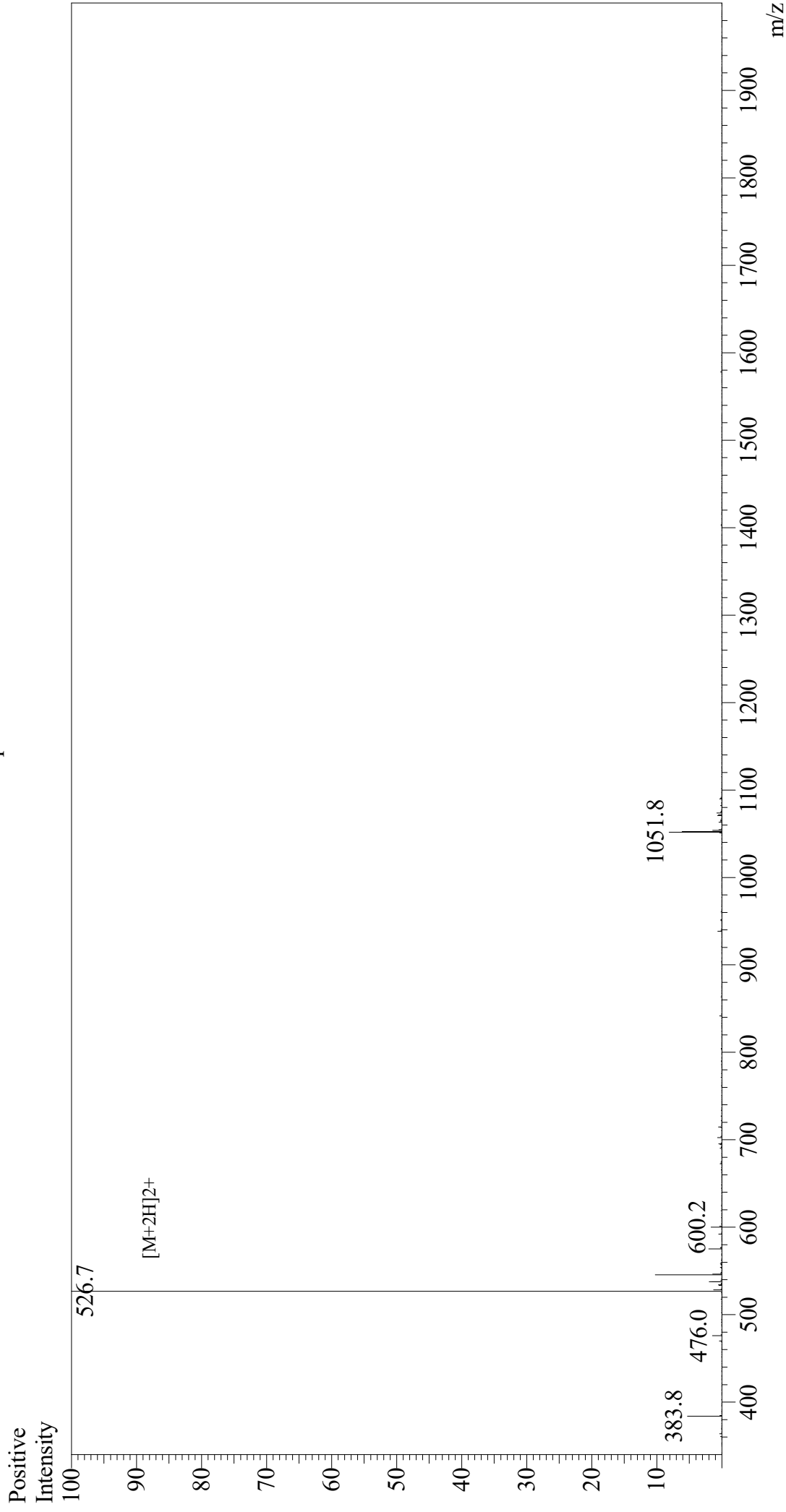


Mass Spectrum



Sample Information

Month-Day Processed : 06/16/21
Time Processed : 14:40:59
Injection Volume : 0.2
Sample Name : CEF6
Cat No.: RP11768
Lot No.: E4027021F
Theoretical MW : 1051.26
Observed MW : 1051.4

Interface : ESI
Nebulizing Gas Flow : 1.5L/min
CDL Temp : 250
Block Temp : 200

Equipment : GK11010007
Interface Bias : +4.5 kV
Drying Gas Flow : 5 L/min
T.Flow : 0.2 ml/min
B.conc : 50% H2O/50% MeOH